

LOT Two-hole mixer with individual rosettes - Brushed Dark Platinum

LOT

32 800 680



- 235mm projection
- pivotable spout 360°
- air-enriched flow
- height of mixer 345 mm
- height up to aerator 319 mm
- individual rosette 55 x 55 mm
- hole diameter spout 35 mm
- single-lever mixer hole diameter 44 mm
- max. flow 8 l/min at 3 bar flow pressure
- lead-free
- WRAS 1909073
- This product can help a building meet the requirements of Green Building Rating Systems, e.g. LEED®, BREEAM®, DGNB

Operating unit can be positioned freely.

| | | |
|--|--------------------------------|---------------|
|  | Brushed Dark Platinum | 32 800 680-99 |
|  | Chrome | 32 800 680-00 |
|  | Brushed Platinum | 32 800 680-06 |
|  | Platinum | 32 800 680-08 |
|  | Dark Chrome | 32 800 680-19 |
|  | Brushed Durabronze (23kt Gold) | 32 800 680-28 |
|  | Brushed Champagne (22kt Gold) | 32 800 680-46 |
|  | Champagne (22kt Gold) | 32 800 680-47 |

Recommended miscellaneous

Dispenser with rosette - Brushed Dark Platinum 82 439 970-99

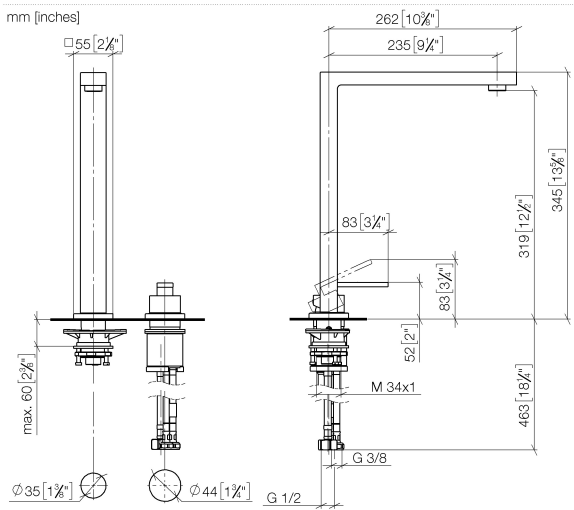


Recommended miscellaneous

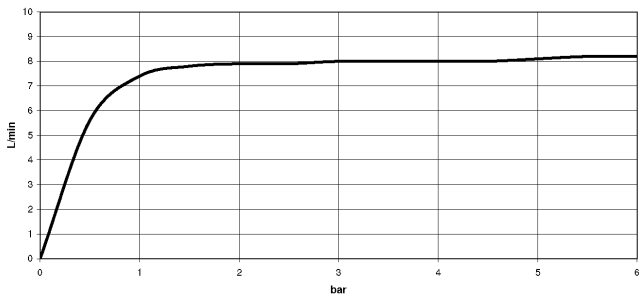
Strainer waste with control handle - Brushed Dark Platinum 10 711 970-99



32 800 680



Flow rate chart



Codes & Standards

DIN 4109

EN 817

Executive Order
no. 1007

ISO 3822

Scottish Water
Byelaws

UK Water Supply
Regulations

Ü-Zeichen

VA-Zeichen



LOT Two-hole mixer with individual rosettes - Brushed Dark Platinum

LOT

32 800 680

Certificates

| | | | | |
|--------|-----------|----------|--------|--------|
| LGA_18 | WRAS_1909 | GDV_0400 | LGA_18 | ETA_18 |
|--------|-----------|----------|--------|--------|

32 800 680

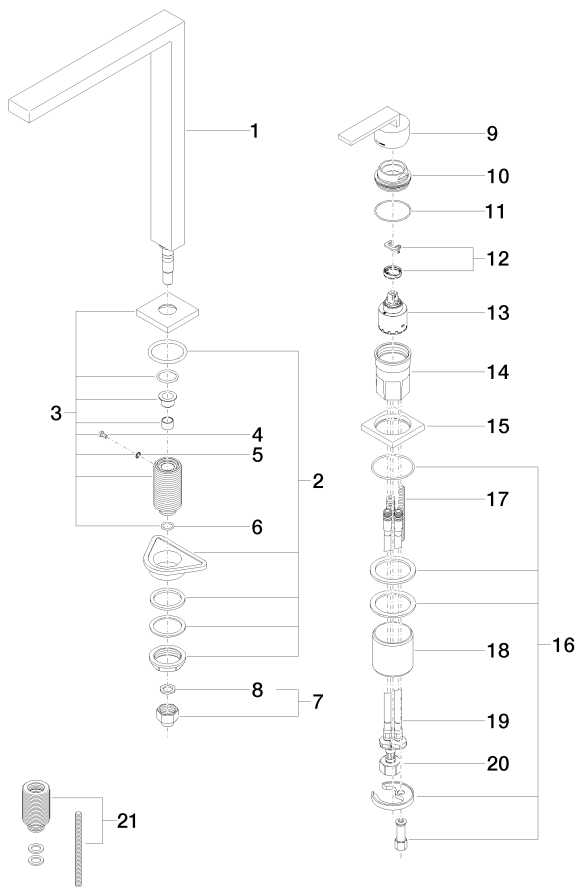
Product version from 5/31/2010 to 3/10/2021

Product version from 3/10/2021 to 5/10/2021

Product version from 5/10/2021

Product version from 6/1/2022

Parts for other
finishes can be found
here: [Chrome](#)





LOT Two-hole mixer with individual rosettes - Brushed Dark Platinum

LOT

32 800 680

Spare parts list

Product version from 5/31/2010 to 3/10/2021

Product version from 3/10/2021 to 5/10/2021

Product version from 5/10/2021

Product version from 6/1/2022

| No. | Item Number | Name | Quantity used | Delivery time |
|-----|--------------------|-------|---------------|---------------|
| | 90 11 06 188 06-99 | spout | 22 | 30 |