

## TARA ULTRA Two-hole mixer with individual rosettes - Matte Black

TARA ULTRA

32 815 875



- 241mm projection
- pivotable spout 360°
- Optional swivel limiter available with swivel limiter set 12 820 970 90
- air-enriched flow
- max. flow 8 l/min at 3 bar flow pressure
- lead-free
- This product can help a building meet the requirements of Green Building Rating Systems, e.g. LEED®, BREEAM®, DGNB
- WRAS 240102014

Operating unit can be positioned freely.

	Matte Black	32 815 875-33
	Chrome	32 815 875-00
	Brushed Platinum	32 815 875-06
	Platinum	32 815 875-08
	Durabrand (23kt Gold)	32 815 875-09
	Dark Chrome	32 815 875-19
	Brushed Durabrand (23kt Gold)	32 815 875-28
	Brushed Champagne (22kt Gold)	32 815 875-46
	Champagne (22kt Gold)	32 815 875-47
	Brushed Chrome	32 815 875-93
	Brushed Dark Platinum	32 815 875-99

### Recommended miscellaneous

**Swivel limitation set -**

12 820 970 90



### Recommended miscellaneous

**Strainer waste with control handle - Matte Black**



### Recommended miscellaneous

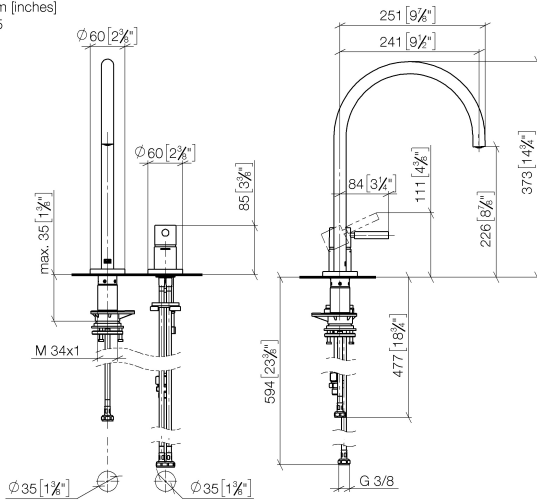
**Dispenser with rosette - Matte Black**

82 444 970-33

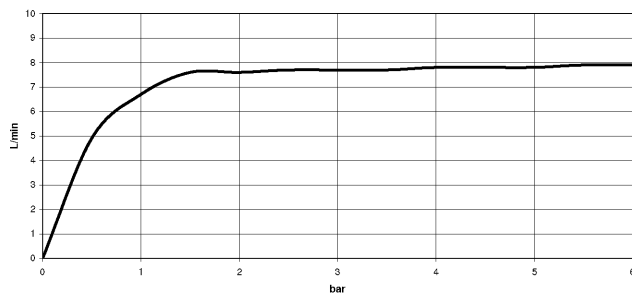


32 815 875

mm [inches]  
1:5



### Flow rate chart



### Codes & Standards

DIN 4109

ISO 3822

Scottish Water  
Byelaws

UK Water Supply  
Regulations

### Ü-Zeichen



## TARA ULTRA Two-hole mixer with individual rosettes - Matte Black

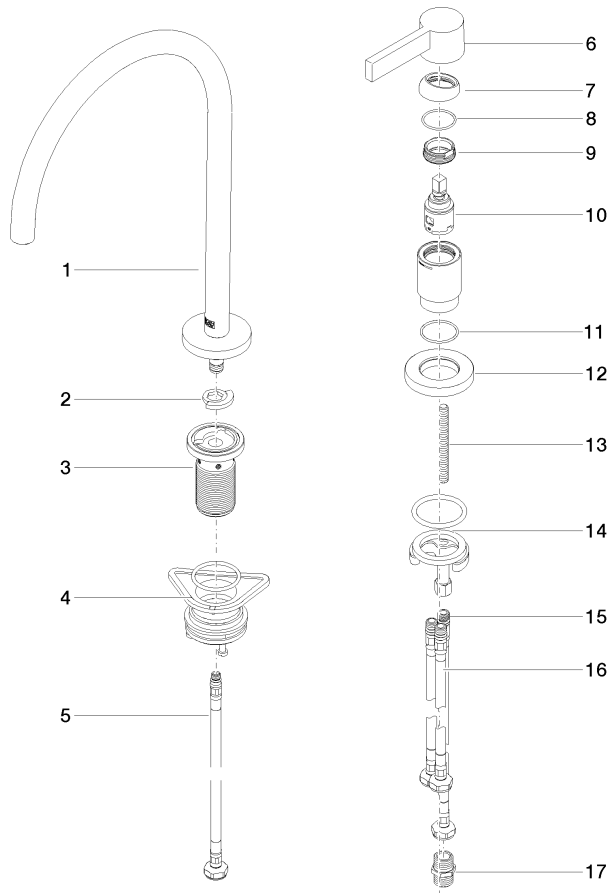
TARA ULTRA

32 815 875

### Certificates

WRAS\_240102

LGA\_38





TARA ULTRA Two-hole mixer with individual rosettes - Matte Black

TARA ULTRA

32 815 875

Spare parts list

No.	Item Number	Name	Quantity used	Delivery time
	90 28 22 377 00-33	spout	18	30