






EDITION PRO GRANDE Single-lever basin mixer without pop-up waste -  
Brushed Chrome

33 522 626



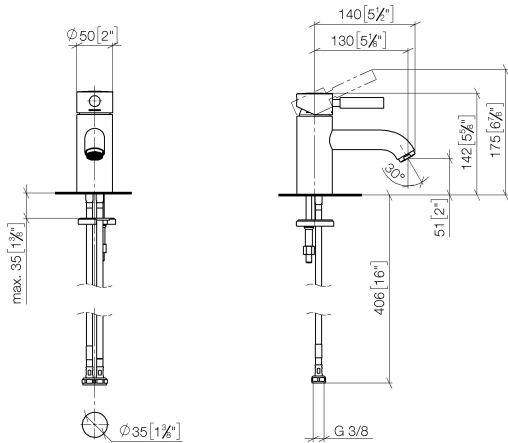
- 130mm projection
- fixed spout
- circular, air-enriched flow
- height of mixer 142 mm
- height up to aerator 51 mm
- hole diameter 35 mm
- 2x screw-in M 10 x 1 pressure hose, leak-tested
- max. flow 7 l/min
- lead-free
- WRAS 1805123

|  |                |               |
|--|----------------|---------------|
|  | Brushed Chrome | 33 522 626-93 |
|  | Chrome         | 33 522 626-00 |
|  | Matte Black    | 33 522 626-33 |

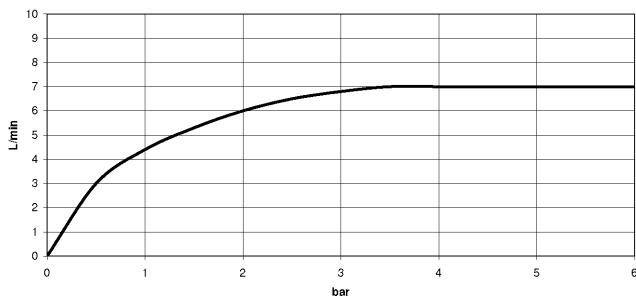


EDITION PRO GRANDE Single-lever basin mixer without pop-up waste -  
Brushed Chrome

33 522 626  
mm [inches]



Flow rate chart



Codes & Standards

DIN 4109

ISO 3822

Scottish Water  
Byelaws

UK Water Supply  
Regulations

Ü-Zeichen



## EDITION PRO GRANDE Single-lever basin mixer without pop-up waste - Brushed Chrome

---

33 522 626

Certificates

---

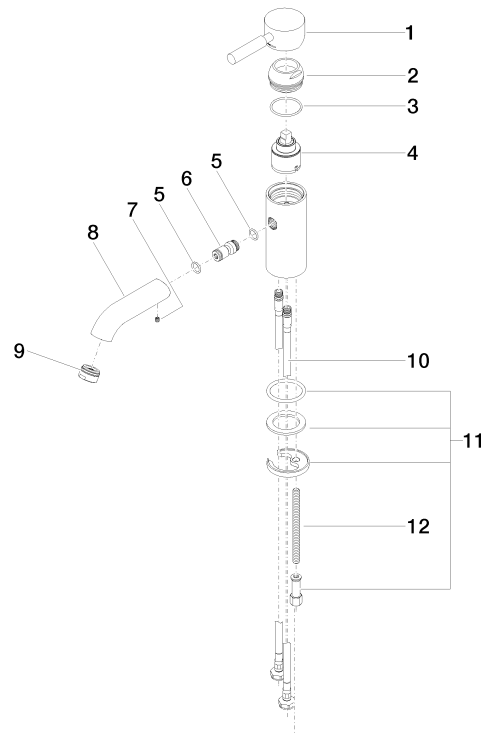
LGA\_9

WRAS\_1805

## EDITION PRO GRANDE Single-lever basin mixer without pop-up waste - Brushed Chrome

33 522 626

Parts for other  
finishes can be found  
here: [Chrome](#)





EDITION PRO GRANDE Single-lever basin mixer without pop-up waste -  
Brushed Chrome

33 522 626

Spare parts list

| No. | Item Number        | Name   | Quantity used | Delivery time |
|-----|--------------------|--------|---------------|---------------|
|     | 90 20 62 047 00-93 | handle | 13            | 20            |