

META SQUARE Single-lever mixer - Brushed Chrome

META SQUARE


33 800 861
Product version from 2/1/2023




- 200mm projection
- pivotable spout 360°
- Optional swivel limiter available with swivel limiter set 12 820 970 90
- air-enriched flow
- max. flow 8 l/min at 3 bar flow pressure
- lead-free
- This product can help a building meet the requirements of Green Building Rating Systems, e.g. LEED®, BREEAM®, DGNB
- WRAS

	Brushed Chrome	33 800 861-93
	Chrome	33 800 861-00
	Brushed Platinum	33 800 861-06
	Platinum	33 800 861-08
	Durabrass (23kt Gold)	33 800 861-09
	Dark Chrome	33 800 861-19
	Brushed Durabrass (23kt Gold)	33 800 861-28
	Matte Black	33 800 861-33
	Brushed Bronze	33 800 861-42
	Brushed Champagne (22kt Gold)	33 800 861-46
	Champagne (22kt Gold)	33 800 861-47
	Brushed Dark Platinum	33 800 861-99

Recommended miscellaneous

	Swivel limitation set -	12 820 970 90
-------------------------------------------------------------------------------------	--------------------------------	---------------

Recommended miscellaneous

	Strainer waste with control handle - Brushed Chrome	10 712 970-93
-------------------------------------------------------------------------------------	------------------------------------------------------------	---------------

Recommended miscellaneous

	Dispenser without rosette - Brushed Chrome	82 424 970-93
-------------------------------------------------------------------------------------	---------------------------------------------------	---------------

33 800 861 Product version from 2/1/2023



Flow rate chart



Codes & Standards

DIN 4109

ISO 3822

Scottish Water
Byelaws

UK Water Supply
Regulations

Ü-Zeichen



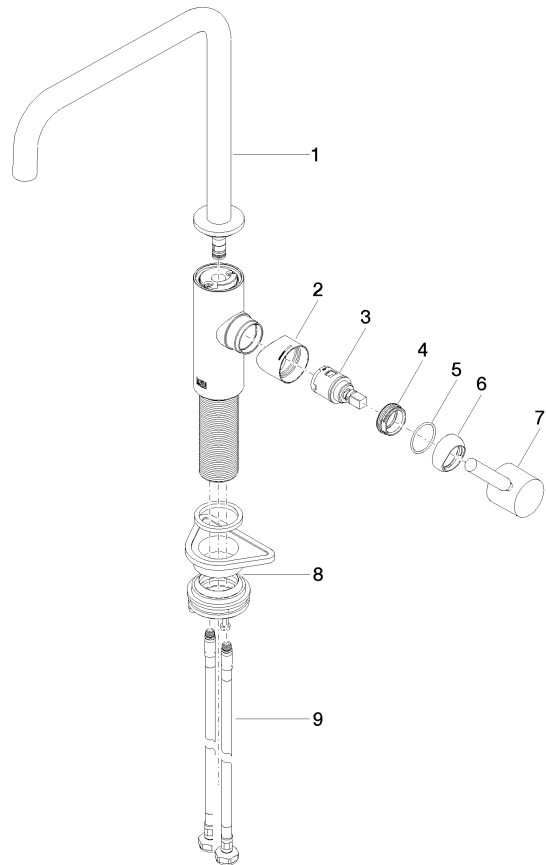
META SQUARE Single-lever mixer - Brushed Chrome

META SQUARE

33 800 861 Product version from 2/1/2023

Certificates and sustainability

LGA_38 WRAS_240102



Spare parts list

No.	Item Number	Name	Quantity used	Delivery time
1	90 28 22 334 00-93	spout	1.00	20
6	90 28 30 052 00-93	cover	1.00	20
8	04 23 10 044 08 90	fixing set	1.00	2
4	09 24 04 266 90	nut	1.00	2
7	90 20 66 003 00-93	handle	1.00	20
3	90 15 05 042 00 90	cartridge	1.00	2
5	09 14 10 091 90	seal	1.00	2
2	09 19 86 012-93	cover	1.00	60
9	04 30 04 101 00 90	hose	2.00	2