

TARA Single-lever mixer - Platinum

TARA

33 800 888 Product version from 5/31/2010 to 10/27/2020



- 201mm projection
- pivotable spout 360°
- air-enriched flow
- height of mixer 325 mm
- height up to aerator 180 mm
- hole diameter 35 mm
- max. flow 7 l/min at 3 bar flow pressure
- lead-free
- WRAS
- This product can help a building meet the requirements of Green Building Rating Systems, e.g. LEED®, BREEAM®, DGNB

| | | |
|---|--------------------------------|---------------|
|  | Platinum | 33 800 888-08 |
|  | Chrome | 33 800 888-00 |
|  | Brushed Platinum | 33 800 888-06 |
|  | Durabronze (23kt Gold) | 33 800 888-09 |
|  | Dark Chrome | 33 800 888-19 |
|  | Brushed Durabronze (23kt Gold) | 33 800 888-28 |
|  | Matte Black | 33 800 888-33 |
|  | Brushed Bronze | 33 800 888-42 |
|  | Brushed Champagne (22kt Gold) | 33 800 888-46 |
|  | Champagne (22kt Gold) | 33 800 888-47 |
|  | Brushed Chrome | 33 800 888-93 |
|  | Brushed Dark Platinum | 33 800 888-99 |

Recommended miscellaneous

Strainer waste with control handle - Platinum 10 710 970-08

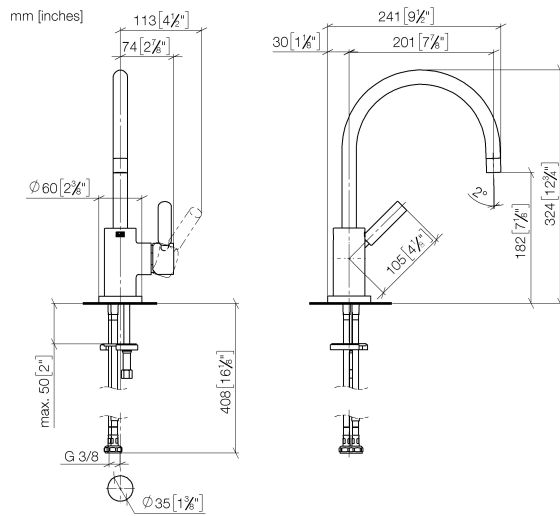


Recommended miscellaneous

Dispenser with rosette - Platinum 82 444 970-08



33 800 888 Product version from 5/31/2010 to 10/27/2020



Flow rate chart



Codes & Standards

| | | | |
|---------------------------|--------------------------------|-----------------------------|------------|
| DIN 4109 | EN 817 | Executive Order no. 1007 | ISO 3822 |
| Scottish Water Byelaws | UK Water Supply Regulations | Ü-Zeichen | VA-Zeichen |



TARA Single-lever mixer - Platinum

TARA

33 800 888 Product version from 5/31/2010 to 10/27/2020

Certificates and sustainability

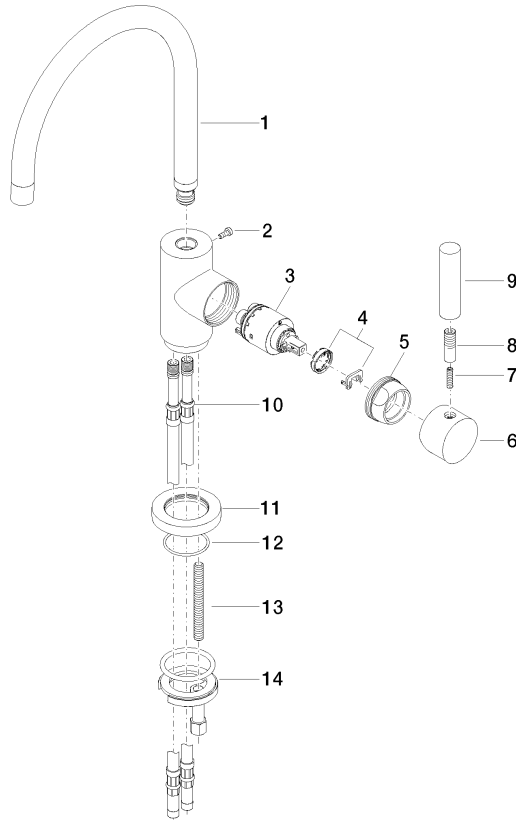
| | | | |
|----------|--------|-------|-----------|
| GDV_0400 | ETA_18 | LGA_8 | WRAS_2311 |
|----------|--------|-------|-----------|

TARA Single-lever mixer - Platinum

TARA

33 800 888 Product version from 5/31/2010 to 10/27/2020

Parts for other
finishes can be found
here: [Chrome](#)



Spare parts list

| No. | Item Number | Name | Quantity used | Delivery time |
|-----|--------------------|-------------|---------------|---------------|
| 5 | 09 24 04 107-08 | nut | 1.00 | 40 |
| 11 | 09 28 10 055-08 | rosette | 1.00 | 40 |
| 1 | 90 28 22 048 02-08 | spout | 1.00 | 40 |
| 12 | 09 14 10 034 90 | seal | 1.00 | 2 |
| 7 | 09 31 11 010 90 | pin | 1.00 | 2 |
| 6 | 90 20 88 040 00-08 | handle | 1.00 | 40 |
| 2 | 09 30 30 054 90 | screw | 1.00 | 2 |
| 10 | 04 30 04 064 00 90 | hose | 2.00 | 2 |
| 13 | 09 31 11 011 90 | pin | 1.00 | 2 |
| 14 | 04 30 11 038 00 90 | fixing set | 1.00 | 2 |
| 9 | 11 170 880-08 | handle | 1.00 | 40 |
| 3 | 90 15 05 065 00 90 | cartridge | 1.00 | 2 |
| 8 | 90 24 04 048 00-08 | nipple | 1.00 | 40 |
| 4 | 90 28 10 148 00 90 | accessories | 1.00 | 2 |