

## MEM BAR TAP Single-lever mixer - Brushed Dark Platinum

MEM

33 805 682



- 166mm projection
- pivotable spout 360°
- Optional swivel limiter available with swivel limiter set 12 820 970 90
- air-enriched flow
- max. flow 6.3 l/min at 3 bar flow pressure
- lead-free
- This product can help a building meet the requirements of Green Building Rating Systems, e.g. LEED®, BREEAM®, DGNB
- WRAS 240202021

	Brushed Dark Platinum	33 805 682-99
	Chrome	33 805 682-00
	Brushed Platinum	33 805 682-06
	Platinum	33 805 682-08
	Durabronze (23kt Gold)	33 805 682-09
	Dark Chrome	33 805 682-19
	Brushed Durabronze (23kt Gold)	33 805 682-28
	Matte Black	33 805 682-33
	Brushed Champagne (22kt Gold)	33 805 682-46
	Champagne (22kt Gold)	33 805 682-47
	Brushed Chrome	33 805 682-93

### Recommended miscellaneous

**Swivel limitation set -** 12 820 970 90



### Recommended miscellaneous

**Strainer waste with control handle - Brushed Dark Platinum** 10 712 970-99



### Recommended miscellaneous

**Dispenser without rosette - Brushed Dark Platinum** 82 424 970-99

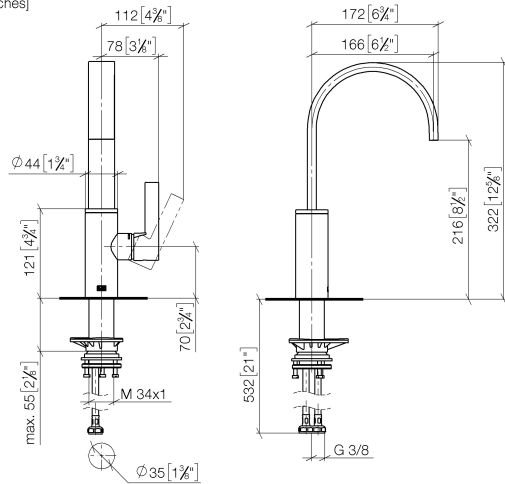


MEM BAR TAP Single-lever mixer - Brushed Dark Platinum

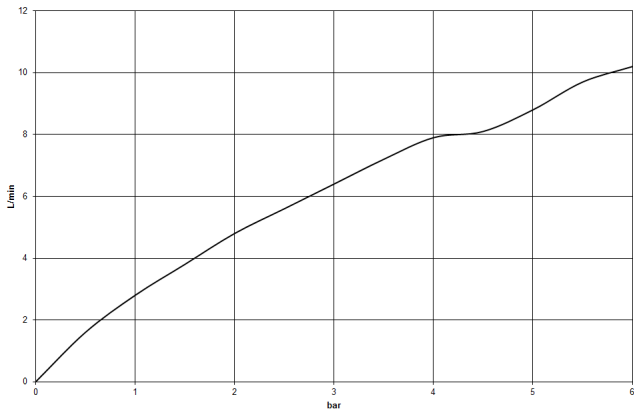
MEM

33 805 682

mm [inches]



Flow rate chart



Codes & Standards

DIN 4109	ISO 3822	Scottish Water Byelaws	UK Water Supply Regulations
----------	----------	------------------------	-----------------------------

Ü-Zeichen



## MEM BAR TAP Single-lever mixer - Brushed Dark Platinum

---

MEM

33 805 682

### Certificates

---

WRAS\_240202      LGA\_38

**Product version from 3/1/2023**





## MEM BAR TAP Single-lever mixer - Brushed Dark Platinum

MEM

33 805 682

### Spare parts list

#### Product version from 3/1/2023

No.	Item Number	Name	Quantity used	Delivery time
	90 28 22 282 00-99	spout	10	-

Spare part can no longer be ordered, please order the replacement item