

VAIA BAR TAP Single-lever mixer - Brushed Dark Platinum

VAIA

33 805 809 Product version from 7/1/2023



- 167mm projection
- gauge mm
- pivotable spout 360°
- air-enriched flow
- max. flow 7 l/min at 3 bar flow pressure
- lead-free
- This product can help a building meet the requirements of Green Building Rating Systems, e.g. LEED®, BREEAM®, DGNB
- WRAS

| | | |
|---|-------------------------------|---------------|
|  | Brushed Dark Platinum | 33 805 809-99 |
|  | Chrome | 33 805 809-00 |
|  | Brushed Platinum | 33 805 809-06 |
|  | Platinum | 33 805 809-08 |
|  | Durabrand (23kt Gold) | 33 805 809-09 |
|  | Dark Chrome | 33 805 809-19 |
|  | Brushed Durabrand (23kt Gold) | 33 805 809-28 |
|  | Matte Black | 33 805 809-33 |
|  | Brushed Bronze | 33 805 809-42 |
|  | Brushed Champagne (22kt Gold) | 33 805 809-46 |
|  | Champagne (22kt Gold) | 33 805 809-47 |
|  | Brushed Chrome | 33 805 809-93 |

Recommended miscellaneous

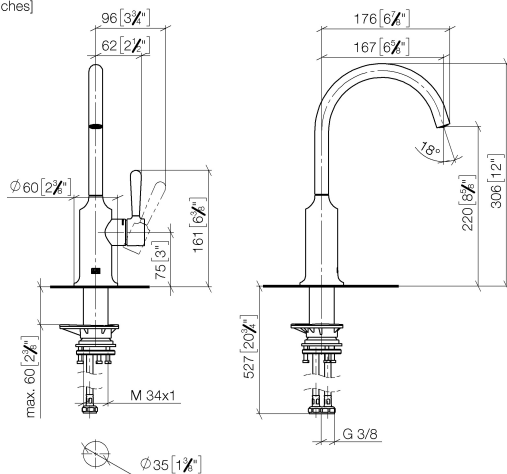
VAIA Dispenser with rosette - 82 434 809-99

Brushed Dark Platinum

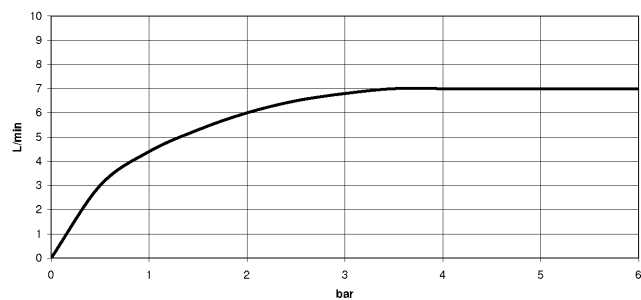


33 805 809 Product version from 7/1/2023

mm [inches]



Flow rate chart



Codes & Standards

DIN 4109

ISO 3822

Scottish Water
Byelaws

UK Water Supply
Regulations

Ü-Zeichen



VAIA BAR TAP Single-lever mixer - Brushed Dark Platinum

VAIA

33 805 809 Product version from 7/1/2023

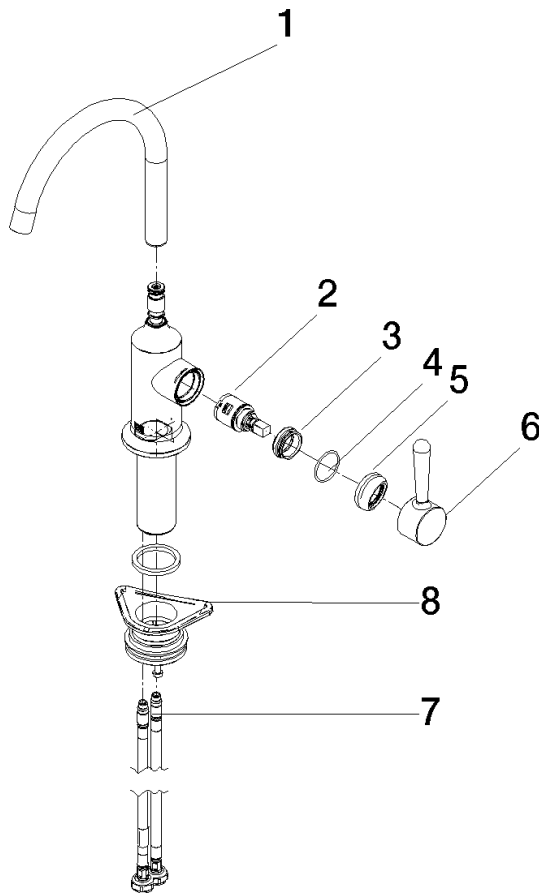
Certificates and sustainability

LGA_29

WRAS_240602

33 805 809 Product version from 7/1/2023

Parts for other
finishes can be found
here: [Chrome](#)



Spare parts list

| No. | Item Number | Name | Quantity used | Delivery time |
|-----|--------------------|------------|---------------|---------------|
| 6 | 90 20 80 050 00-99 | handle | 1.00 | 20 |
| 1 | 90 28 22 311 02-99 | spout | 1.00 | 20 |
| 4 | 09 14 10 091 90 | seal | 1.00 | 2 |
| 3 | 09 24 04 266 90 | nut | 1.00 | 2 |
| 8 | 04 23 10 044 08 90 | fixing set | 1.00 | 2 |
| 5 | 90 28 30 052 00-99 | cover | 1.00 | 20 |
| 2 | 90 15 05 042 00 90 | cartridge | 1.00 | 2 |
| 7 | 04 30 04 100 00 90 | hose | 2.00 | 2 |