

## TARA Single-lever mixer Pull-down with spray function - Durabronss (23kt Gold)

TARA

33 870 888 Product version from 2/1/2023 to 10/30/2024



- 240mm projection
- pivotable spout 360°
- Optional swivel limiter available with swivel limiter set 12 823 970 90
- laminar and spray flow
- 1800 mm metal shower hose
- sprayface with anti-scaling system
- max. flow 10.4 l/min at 3 bar flow pressure
- lead-free
- Flow modes can be changed while the water is running
- This product can help a building meet the requirements of Green Building Rating Systems, e.g. LEED®, BREEAM®, DGNB

Intrinsic protection against back flow.

|  |                                |               |
|--|--------------------------------|---------------|
|  | Durabronss (23kt Gold)         | 33 870 888-09 |
|  | Chrome                         | 33 870 888-00 |
|  | Brushed Platinum               | 33 870 888-06 |
|  | Platinum                       | 33 870 888-08 |
|  | Dark Chrome                    | 33 870 888-19 |
|  | Brushed Durabronss (23kt Gold) | 33 870 888-28 |
|  | Matte Black                    | 33 870 888-33 |
|  | Brushed Bronze                 | 33 870 888-42 |
|  | Brushed Champagne (22kt Gold)  | 33 870 888-46 |
|  | Champagne (22kt Gold)          | 33 870 888-47 |
|  | Brushed Chrome                 | 33 870 888-93 |
|  | Brushed Dark Platinum          | 33 870 888-99 |

### Recommended miscellaneous

**Swivel limitation set -**

12 823 970 90



### Recommended miscellaneous

**Dispenser with rosette - Durabronss (23kt Gold)**

82 444 970-09



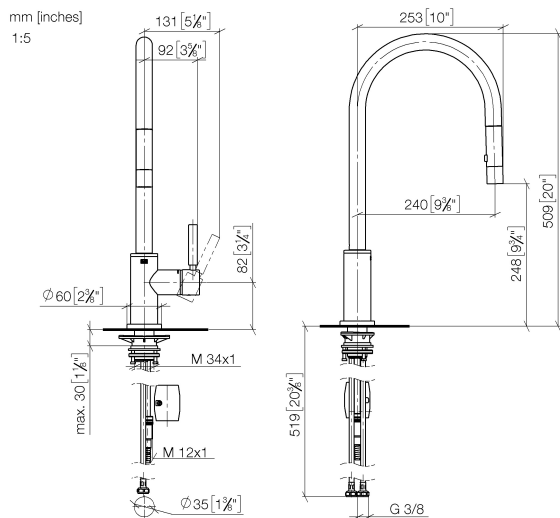
### Recommended miscellaneous

**Strainer waste with control handle - Durabronss (23kt Gold)**

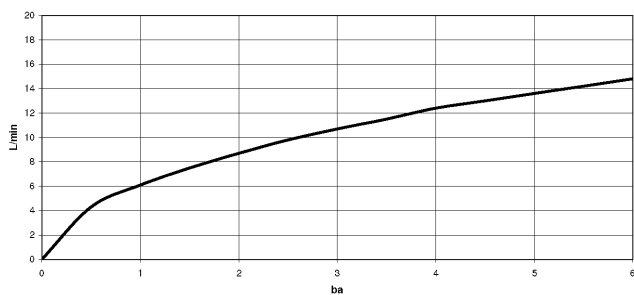
10 710 970-09



33 870 888 Product version from 2/1/2023 to 10/30/2024



**Flow rate chart**



## Codes & Standards

DIN 4109

EN 1717

ISO 3822

Ü-Zeichen



## TARA Single-lever mixer Pull-down with spray function - Durabrass (23kt Gold)

---

TARA

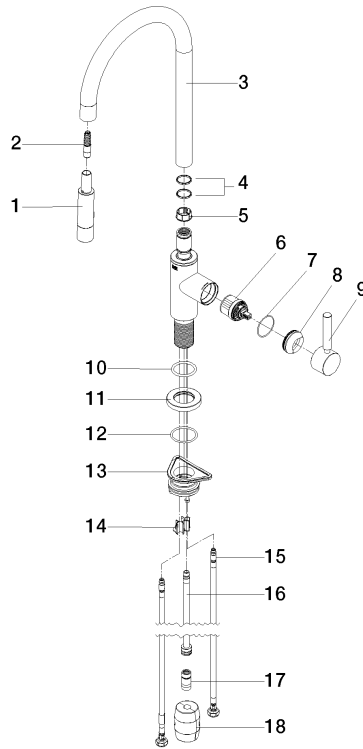
33 870 888 Product version from 2/1/2023 to 10/30/2024

### Certificates and sustainability

---

LGA\_38

Belgaqua\_24-005-2



## Spare parts list

| No.  | Item Number           | Name        | Quantity used | Delivery time |
|--|-----------------------|-------------|---------------|---------------|
|  | 4 09 28 10 160 90     | ring        | 2.00          | 2             |
|  | 2 04 30 02 120 00-85  | hose        | 1.00          | 10            |
|  | 5 09 18 40 186 90     | sleeve      | 1.00          | 2             |
|  | 3 90 28 22 304 00-09  | spout       | 1.00          | 40            |
|  | 16 04 28 20 067 00 90 | pipe        | 1.00          | 2             |
|  | 13 04 30 11 040 00 90 | fixing set  | 1.00          | 2             |
|  | 1 90 12 11 148 00-09  | shower      | 1.00          | 60            |
|  | 9 90 20 66 027 00-09  | handle      | 1.00          | 40            |
|  | 10 09 14 10 036 90    | seal        | 1.00          | 2             |
|  | 15 04 30 04 101 00 90 | hose        | 2.00          | 2             |
|  | 12 09 14 10 050 90    | seal        | 1.00          | 2             |
|  | 14 09 20 93 056 90    | insert      | 1.00          | 2             |
|  | 18 04 21 50 010 00 90 | accessories | 1.00          | 2             |
|  | 8 09 28 30 030-09     | cover       | 1.00          | 40            |
|  | 7 09 14 10 190 90     | seal        | 1.00          | 2             |
|  | 11 90 27 22 047 00-09 | rosette     | 1.00          | -             |
| Spare part can no longer be ordered, please order the replacement item |                       |             |               |               |
|  | 17 90 24 03 253 00 90 | adaptor     | 1.00          | 2             |
|  | 6 90 15 05 064 05 90  | cartridge   | 1.00          | 2             |