

ELIO Single-lever mixer Pull-out with spray function - Dark Chrome









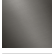
ELIO

33 871 790 Product version from 4/1/2024



- 219mm projection
- pivoting spout 360°
- air-enriched flow and spray flow
- height of mixer 337 mm
- height up to aerator 292 mm
- hole diameter 35 mm
- fabric braided hose 1500 mm
- max. flow 8 l/min at 3 bar flow pressure
- lead-free
- This product can help a building meet the requirements of Green Building Rating Systems, e.g. LEED®, BREEAM®, DGNB

Intrinsic protection against back flow.

	Dark Chrome	33 871 790-19
	Chrome	33 871 790-00
	Brushed Platinum	33 871 790-06
	Platinum	33 871 790-08
	Brushed Durabronze (23kt Gold)	33 871 790-28
	Brushed Bronze	33 871 790-42
	Brushed Champagne (22kt Gold)	33 871 790-46
	Champagne (22kt Gold)	33 871 790-47
	Brushed Chrome	33 871 790-93
	Brushed Dark Platinum	33 871 790-99

Recommended miscellaneous

Strainer waste with control handle - Dark Chrome 10 712 970-19

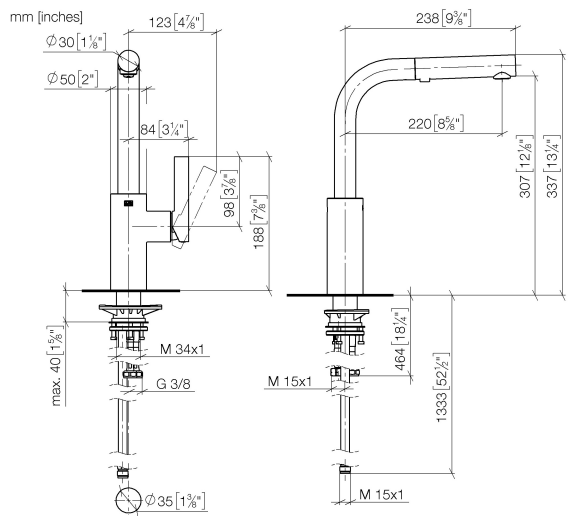


Recommended miscellaneous

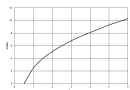
Dispenser without rosette - Dark Chrome 82 424 970-19



33 871 790 Product version from 4/1/2024



Flow rate chart



Codes & Standards

DIN 4109

ISO 3822

Ü-Zeichen



ELIO Single-lever mixer Pull-out with spray function - Dark Chrome

ELIO

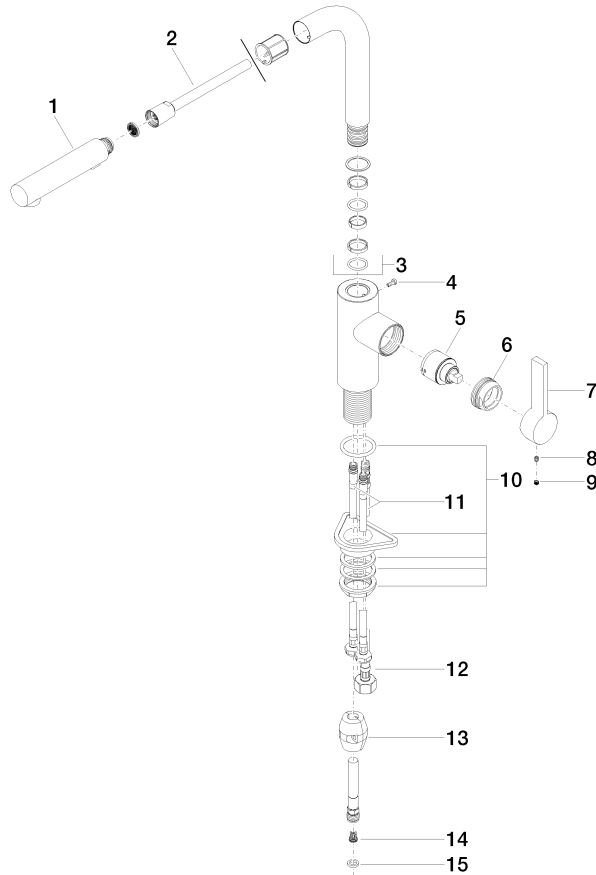
33 871 790 Product version from 4/1/2024

Certificates and sustainability

LGA_38

33 871 790 Product version from 4/1/2024

Parts for other
finishes can be found
here: [Chrome](#)



Spare parts list

No.	Item Number	Name	Quantity used	Delivery time
	10 04 30 11 040 00 90	fixing set	1.00	2
	14 09 23 01 131 90	back-flow preventer	1.00	2
	7 09 20 79 040-19	handle	1.00	60
	3 90 28 22 186 00-19	spout	1.00	20
	12 04 30 04 029 00 90	hose	1.00	2
	4 09 30 30 054 90	screw	1.00	2
	8 90 31 11 030 00 90	pin	1.00	2
	6 09 24 04 141-19	nut	1.00	20
	13 04 21 50 005 00 90	accessories	1.00	2
	1 90 12 11 185 00-19	shower	1.00	-
Spare part can no longer be ordered, please order the replacement item				
	11 04 30 04 104 00 90	hose	2.00	2
	5 90 15 05 045 00 90	cartridge	1.00	2
	15 90 14 20 019 00 90	seal	1.00	2
	2 90 30 02 062 00-19	hose	1.00	20
	9 90 31 20 109 00 90	plug	1.00	2