

Showerpipe with shower thermostat without hand shower FlowReduce - Brushed Platinum

IMO

34 459 979



Fits: IMO, LULU, TARA, LISSÉ, VAIA, META

- shower with fixed riser projection 453mm
- overhead shower: rain flow
- rain shower Ø 220 mm
- rain shower with anti-scale system
- max. rainshower flow 7 l/min
- rotary diverter with volume control and shut-off function
- slide-on rosettes Ø 70 mm
- height of fittings up to rain shower (bottom edge) 1009mm
- height of fittings up to top edge of elbow 1150mm
- gauge 150 mm - 13 mm
- metal shower hose 1750mm with integrated anti-twist protection
- 1/2" connection
- slide bar
- Pipe diameter 23.5 mm
- quick clearing
- This product can help a building meet the requirements of Green Building Rating Systems, e.g. LEED®, BREEAM®, DGNB
- WRAS 2204013

This article does not include a hand shower!

Intrinsic protection against back flow.

	Brushed Platinum	34 459 979-06
	Chrome	34 459 979-00
	Platinum	34 459 979-08
	Dark Chrome	34 459 979-19
	Light Gold	34 459 979-26
	Brushed Light Gold	34 459 979-27
	Brushed Durabronze (23kt Gold)	34 459 979-28
	Matte Black	34 459 979-33
	Brushed Bronze	34 459 979-42
	Brushed Champagne (22kt Gold)	34 459 979-46
	Champagne (22kt Gold)	34 459 979-47
	Brushed Chrome	34 459 979-93
	Brushed Dark Platinum	34 459 979-99

Showerpipe with shower thermostat without hand shower FlowReduce - Brushed Platinum

IMO

34 459 979

Required miscellaneous



**Hand shower FlowReduce -
Brushed Platinum**

28 012 979-06
0010

Required miscellaneous



Hand shower - Brushed Platinum 28 016 979-06

Required miscellaneous



**Hand shower FlowReduce -
Brushed Platinum**

28 016 979-06
0010

Required miscellaneous



**Hand shower FlowReduce -
Brushed Platinum**

28 018 979-06
0010

Required miscellaneous



**SERIES-VARIOUS Hand shower -
Brushed Platinum**

28 029 979-06
0010

Required miscellaneous



**SERIES-VARIOUS Hand shower -
Brushed Platinum**

28 025 979-06
0010

Required miscellaneous



Hand shower - Brushed Platinum 28 017 979-06

Required miscellaneous



Hand shower - Brushed Platinum 28 012 979-06

Required miscellaneous



Hand shower - Brushed Platinum 28 018 979-06

Required miscellaneous



**SERIES-VARIOUS Hand shower -
Brushed Platinum** 28 029 979-06

Required miscellaneous



**SERIES-VARIOUS Hand shower -
Brushed Platinum** 28 027 979-06
0010

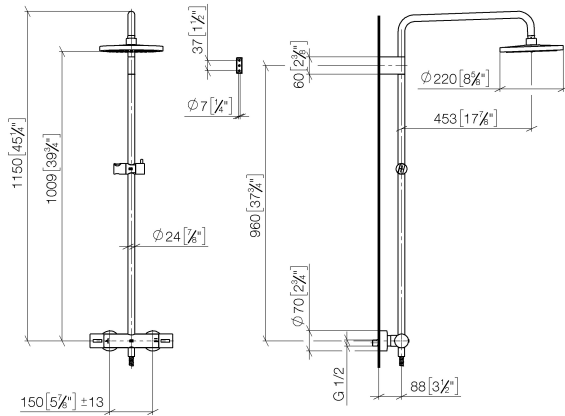
Showerpipe with shower thermostat without hand shower FlowReduce - Brushed Platinum

IMO

34 459 979

mm [inches]

1:10



Flow rate chart



Codes & Standards

DIN 4109

EN 1111

EN 1717

ISO 3822

Scottish Water
Byelaws

UK Water Supply
Regulations

Ü-Zeichen



Showerpipe with shower thermostat without hand shower FlowReduce - Brushed Platinum

IMO

34 459 979

Certificates

WRAS_2204

DVGW_DW-
6509DN0

Belgaqua_21-032-2 LGA_38

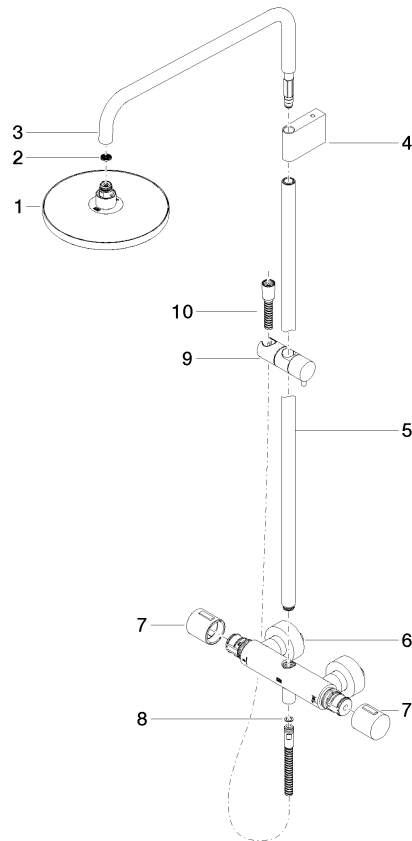
Showerpipe with shower thermostat without hand shower FlowReduce - Brushed Platinum

IMO

34 459 979

Product version from 4/1/2024

Parts for other
finishes can be found
here: [Chrome](#)





Showerpipe with shower thermostat without hand shower FlowReduce -
Brushed Platinum

IMO

34 459 979

Spare parts list

Product version from 4/1/2024

No.	Item Number	Name	Quantity used	Delivery time
	90 12 05 092 20-06	shower	11	10