



- concealed rough parts
- 2x female thread 1/2" connections
- flush-mounted installation box 360x 300 mm RAL 9003 signal white
- For simultaneous control of the jet types, we recommend the xTool thermostat module

## Separate LED power supply

### Input LED power supply

- Electricity supply: 100-240 V AC, 50-60 Hz, 20 W

### Output LED power supply

- 12V DC (CV)

### Output specification LED power supply

- SELV (Safety Extra Low Voltage)
- Class 2

### Ceiling module power supply

- 12V DC (CV)
- Supply pipe 7 m

### Activation

- ZigBee Light Link RGBW controller
- Provided by customer: Zigbee gateway
- Not suitable for outdoor use.
- Not suitable for use in a steam room.
- Not suitable for use in chlorinated or salty environments.
- Comply with the protection zone regulations as defined in DIN VDE 0100, Part 701 (IEC 60364-7-701).
- Dornbracht recommends consulting a systems integrator.
- WRAS

### Pre-assembly kit for three-way diverter included

Pre-assembly kit for three-way diverter included

## Required miscellaneous

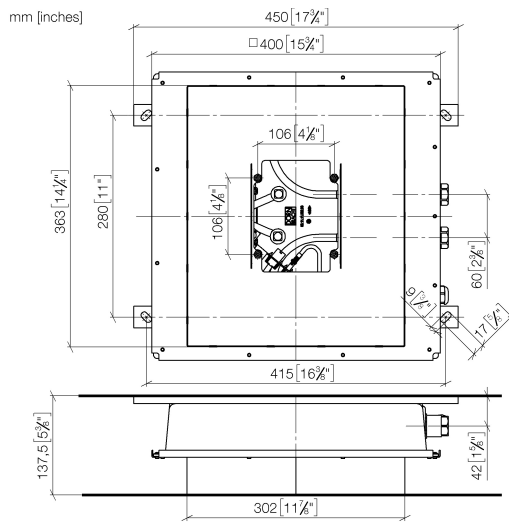
### Leak protection 1/2" -

- This article is needed 2x.

12 010 970 90



35 044 970 90 Product version from 4/1/2022



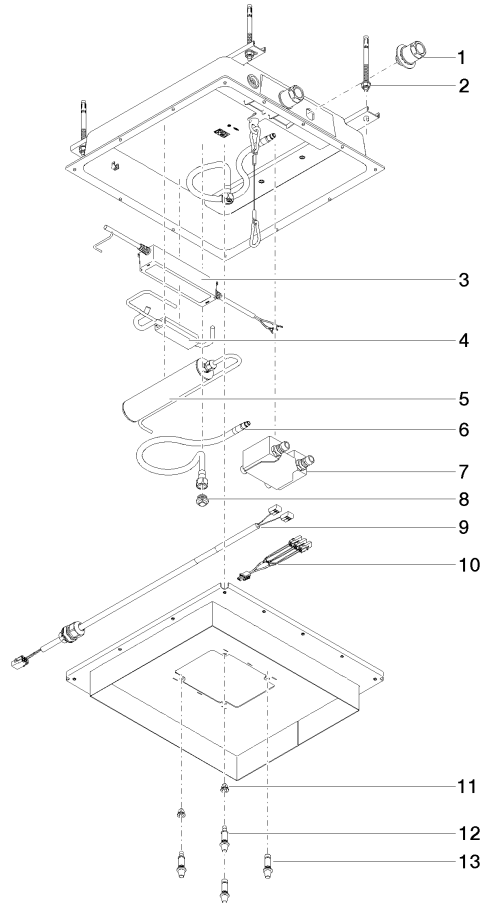
### Codes & Standards

Scottish Water  
Byelaws

UK Water Supply  
Regulations

### Certificates and sustainability

WRAS\_240502



## Spare parts list

No.	Item Number	Name	Quantity used	Delivery time
6	04 30 04 097 00 90	hose	2.00	60
10	90 10 01 228 00 90	electronic accessories	1.00	2
8	09 31 20 042 90	plug	2.00	2
7	90 30 01 216 10 90	Venting service kit	1.00	2
1	90 24 03 305 00 90	fixing set	2.00	2
9	90 10 01 229 00 90	electronic accessories	1.00	2
2	04 30 35 008 00 90	fixing set	1.00	2
3	90 10 01 212 00 90	electronic accessories	1.00	2
4	90 10 01 214 00 90	electronic accessories	1.00	2
11	90 14 03 189 00 90	plug	1.00	2
5	90 10 01 211 00 90	electronic accessories	2.00	2
12	90 30 01 215 01 90	fixing set	2.00	2
13	90 30 01 215 00 90	fixing set	2.00	2