

35 050 970 90



- red brass, lead-free
- 2x female thread 1/2" connections
- dust cover
- anti-water packing
- soundproofing
- WRAS

Required miscellaneous

<div>Example Image</div>	<div> Drybox Concealed thermostat - •Overflow is part of the scope of delivery. </div>	<div>XS-09 0728</div>
--------------------------	--	-----------------------

Recommended miscellaneous

	<div> Extension 25 mm - </div>	<div>12 055 970 90</div>
--	---------------------------------------	--------------------------

Recommended miscellaneous

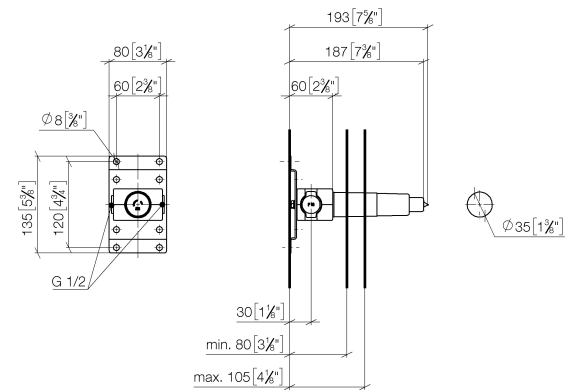
	<div> Rosette - Chrome •with round rosette </div>	<div>12 720 660-00</div>
--	---	--------------------------

Recommended miscellaneous

	<div> Rosette - Chrome •with angular rosette </div>	<div>12 720 980-00</div>
--	---	--------------------------

35 050 970 90

mm [inches]



Codes & Standards

EN 817

Scottish Water
Byelaws

UK Water Supply
Regulations

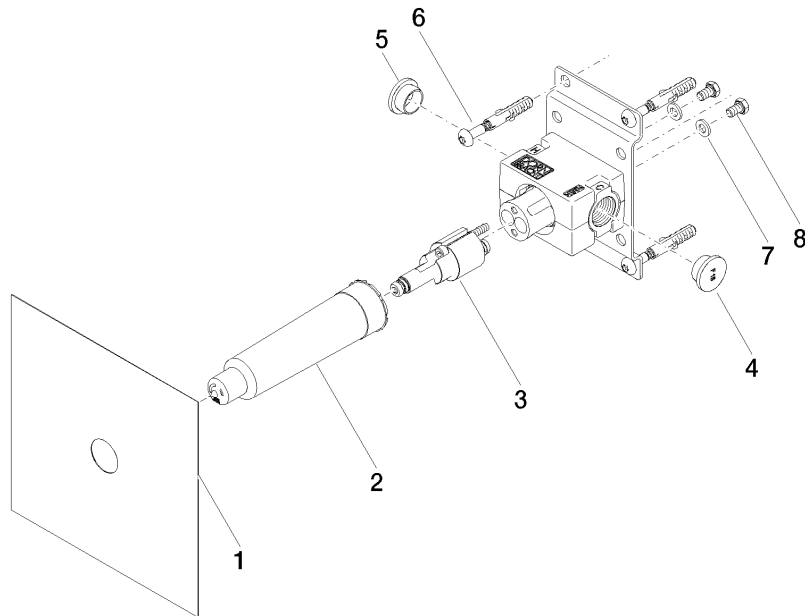
Certificates and sustainability

DVGW_DW-
6512DN0

WRAS_2101

WRAS_2011

35 050 970 90



Spare parts list

No.	Item Number	Name	Quantity used	Delivery time
2	09 21 02 173 90	cap	1.00	2
7	09 30 11 144 90	disc	2.00	2
6	04 30 31 024 01 90	fixing set	2.00	2
3	90 31 20 116 00 90	plug	1.00	2
4	09 31 20 094 90	plug	1.00	2
5	09 31 20 093 90	plug	1.00	2
8	09 30 30 049 90	screw	2.00	2
1	04 14 03 072 01 90	gasket kit	1.00	2