

Concealed wall elbow -

SERIES-VARIOUS

35 085 970 90 Product version from 3/7/2023



- red brass, lead-free
 - female thread 1/2" connection
 - 1x female thread 1/2" outlet
 - dust cover
 - anti-water packing
 - soundproofing
 - WRAS
- For wall-mounted spouts and wall outlet elbows with 1/2" connection.**
- For wall-mounted spouts and wall outlet elbows with 1/2" connection.

Required miscellaneous



Drybox Concealed thermostat - XS-09 0728

- Overflow is part of the scope of delivery.

Required miscellaneous



Leak protection 1/2" - 12 010 970 90

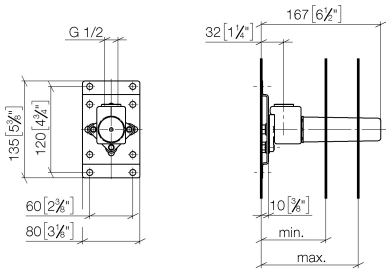
Concealed wall elbow -

SERIES-VARIOUS

35 085 970 90

Product version from 3/7/2023

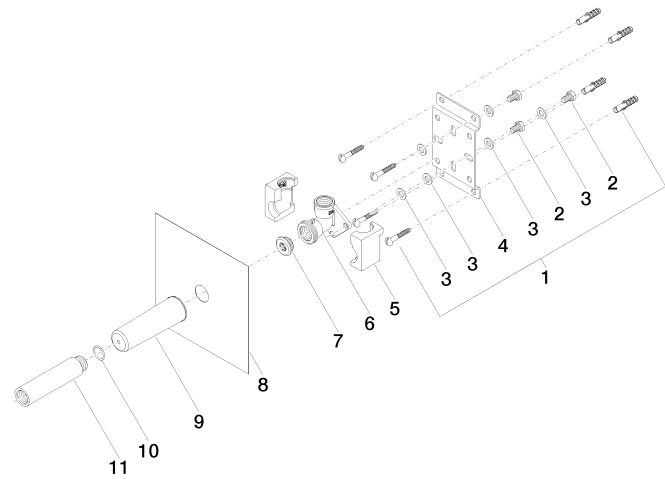
mm [inches]



	min	max
CL. 1	90 [3 1/2"]	163 [6 3/8"]
CL. 2	68 [2 5/8"]	135 [5 3/8"]
Domicil	90 [3 1/2"]	163 [6 3/8"]
Gentle	90 [3 1/2"]	163 [6 3/8"]
IMO	90 [3 1/2"]	163 [6 3/8"]
Lissé	90 [3 1/2"]	163 [6 3/8"]
MEM	90 [3 1/2"]	163 [6 3/8"]
Symetrics	90 [3 1/2"]	163 [6 3/8"]
Vaia	90 [3 1/2"]	163 [6 3/8"]

Codes & Standards			
DIN 4109	ISO 3822	Scottish Water Byelaws	UK Water Supply Regulations
Ü-Zeichen			

Certificates and sustainability	
LGA_29	WRAS_240502



Spare parts list

No.	Item Number	Name	Quantity used	Delivery time
	9 09 21 02 102 90	cap	1.00	2
	5 09 11 11 036 90	accessories	1.00	2
	2 09 30 30 152 90	screw	3.00	2
	4 09 17 20 094 90	holder	1.00	2
	1 04 30 31 024 01 90	fixing set	2.00	2
	3 09 30 11 139 90	disc	6.00	2
	6 09 11 03 041 10 90	connection	1.00	2
	11 09 24 03 169 10 90	adaptor	1.00	2
	7 04 31 20 006 00 90	plug	1.00	2
	8 04 14 03 072 01 90	gasket kit	1.00	2
	10 90 14 10 010 00 90	seal	1.00	2