

## Concealed wall-mounted single-lever mixer mixer on right -

---

35 816 970 90 Product version from 3/16/2015



- 2x female thread 1/2" connections
- 2x 1/2" x 1000mm high pressure hose
- 1x female thread 1/2" outlet for wall spout
- cartridge
- gauge 100 mm
- lead-free

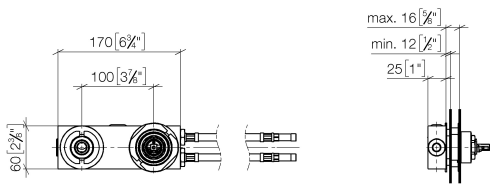
Recommended combination for this fitting:Rear walls with- wall thickness: 12-16 mm- spout hole diameter: 40 mm- mixer hole diameter: 58 mm- clear width behind wall: 25 mm

NOTE:Not suitable for concealed installation.Connection by means of angle valves, mounted with screws to back wall.

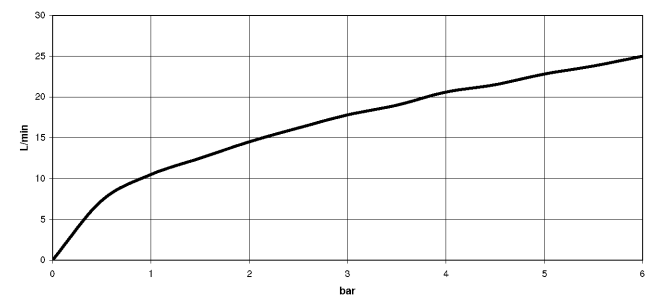
**Concealed wall-mounted single-lever mixer mixer on right -**

35 816 970 90    Product version from 3/16/2015

mm [inches]

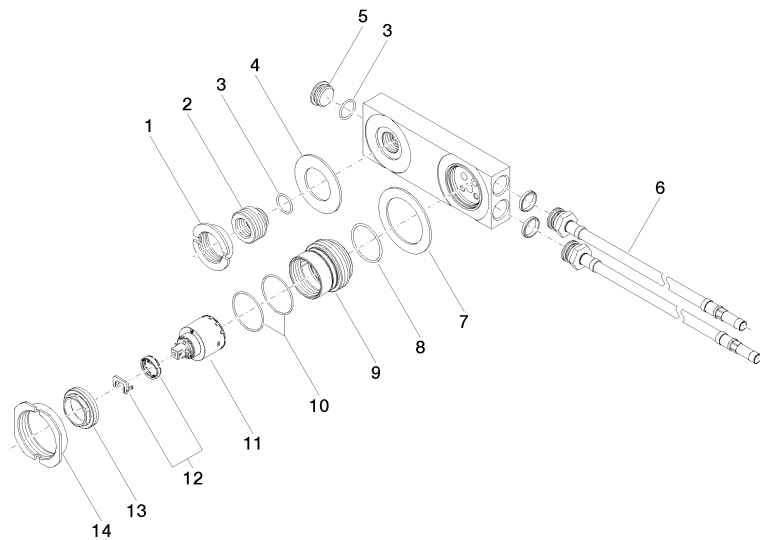


**Flow rate chart**



## Concealed wall-mounted single-lever mixer mixer on right -

35 816 970 90 Product version from 3/16/2015



### Spare parts list

No.	Item Number	Name	Quantity used	Delivery time
1	09 23 10 019-07	nut	1	30
2	09 24 03 064 10 90	nipple	1	2
3	09 14 10 053 90	seal	2	2
4	09 14 05 022 90	seal	1	2
5	09 31 20 032 10 90	plug	1	60
6	09 30 04 059 90	hose	2	2
7	09 14 05 019 90	seal	1	60
8	09 14 10 034 90	seal	1	2
9	09 17 01 039 10 90	base	1	2
10	09 14 10 190 90	seal	2	2
11	90 15 05 065 00 90	cartridge	1	2
12	90 28 10 148 00 90	accessories	1	2
13	09 24 04 105 90	nut	1	2
14	09 23 30 047 90	nut	1	2