

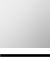



LISSÉ Concealed single-lever mixer with cover plate - Brushed Light Gold

LISSÉ

36 060 845
Product version from 4/1/2024

- cover plate 78 x 78 mm



| | | |
|---|-----------------------|---------------|
|  | Brushed Light Gold | 36 060 845-27 |
|  | Chrome | 36 060 845-00 |
|  | Brushed Platinum | 36 060 845-06 |
|  | Dark Chrome | 36 060 845-19 |
|  | Matte Black | 36 060 845-33 |
|  | Brushed Chrome | 36 060 845-93 |
|  | Brushed Dark Platinum | 36 060 845-99 |

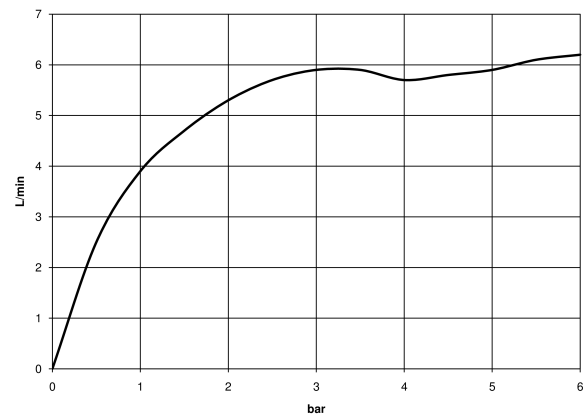
Required miscellaneous



- Concealed wall-mounted single-lever mixer -
35 860 970 90

 - min. recess depth 80 mm
 - max. recess depth 95 mm

Flow rate chart



Codes & Standards

DIN 4109

ISO 3822

Ü-Zeichen



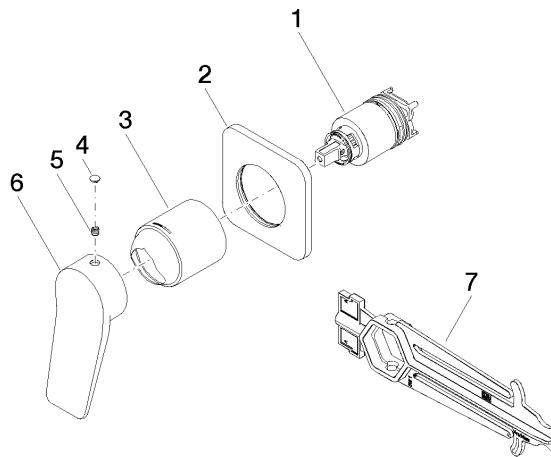
LISSE Concealed single-lever mixer with cover plate - Brushed Light Gold

LISSE

36 060 845 Product version from 4/1/2024

Certificates and sustainability

LGA_29



Spare parts list

| No. | Item Number | Name | Quantity used | Delivery time |
|-----|--------------------|-----------|---------------|---------------|
| 7 | 90 30 09 064 00 90 | key | 1.00 | 2 |
| 3 | 09 11 02 288-27 | cover | 1.00 | 60 |
| 2 | 90 27 84 020 00-27 | rosette | 1.00 | 20 |
| 1 | 90 15 05 046 02 90 | cartridge | 1.00 | 2 |
| 4 | 90 31 20 087 00-27 | plug | 1.00 | 20 |
| 5 | 90 31 11 030 00 90 | pin | 1.00 | 2 |
| 6 | 09 20 84 021-27 | handle | 1.00 | 60 |