

IMO Wall valve anti-clockwise closing 1/2" - Brushed Durabross (23kt Gold)

36 607 980 Product version from 6/1/2024



- rosette 60 x 60 mm
- head part with cut-to-length spindle and sleeve
- WRAS

	Brushed Durabrass (23kt Gold)	36 607 980-28
	Chrome	36 607 980-00
	Brushed Platinum	36 607 980-06
	Platinum	36 607 980-08
	Dark Chrome	36 607 980-19
	Brushed Light Gold	36 607 980-27
	Matte Black	36 607 980-33
	Brushed Chrome	36 607 980-93
	Brushed Dark Platinum	36 607 980-99

## Required miscellaneous



Wall valve 1/2" -

- max. recess depth mm
- min. recess depth mm

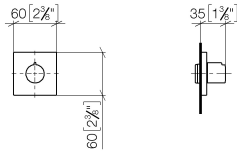
35 607 970 90



IMO Wall valve anti-clockwise closing 1/2" - Brushed Durabross (23kt Gold)

36 607 980    Product version from 6/1/2024

mm [inches]



Codes & Standards

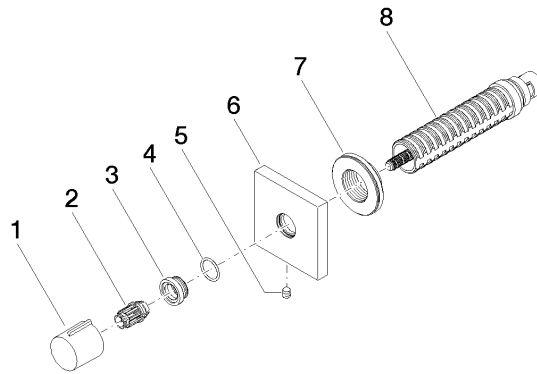
DIN 4109	EN 1111	EN 200	ISO 3822
Scottish Water Byelaws	UK Water Supply Regulations	Ü-Zeichen	

Certificates

DVGW_DW-6501DN0	WRAS_2011	LGA_29	WRAS_2010	DVGW_DW-6512DN0
LGA_29				

## IMO Wall valve anti-clockwise closing 1/2" - Brushed Durabronz (23kt Gold)

36 607 980 Product version from 6/1/2024



### Spare parts list

No.	Item Number	Name	Quantity used	Delivery time
1	09 20 98 001-28	handle	1	20
2	09 12 12 005 90	fixing cap	1	2
3	09 12 12 043-28	base	1	20
4	09 14 10 017 90	seal	1	2
5	90 31 11 004 00 90	pin	1	2
6	09 27 98 014-28	rosette	1	20
7	09 21 02 151 90	sleeve	1	2
8	90 90 03 202 00 90	top	1	2