

META Wall-mounted single-lever basin mixer without pop-up waste - Matte Black

META

36 804 661



- 160mm projection
- fixed spout
- circular, air-enriched flow
- hole diameter 60 mm
- rosette Ø 78 mm
- max. flow 5.7 l/min
- lead-free
- with single-point mounting
- This product can help a building meet the requirements of Green Building Rating Systems, e.g. LEED®, BREEAM®, DGNB
- WRAS 2003025

	Matte Black	36 804 661-33
	Chrome	36 804 661-00
	Brushed Platinum	36 804 661-06
	Dark Chrome	36 804 661-19
	Light Gold	36 804 661-26
	Brushed Light Gold	36 804 661-27
	Brushed Bronze	36 804 661-42
	Brushed Champagne (22kt Gold)	36 804 661-46
	Champagne (22kt Gold)	36 804 661-47
	Brushed Chrome	36 804 661-93
	Brushed Dark Platinum	36 804 661-99

Required miscellaneous



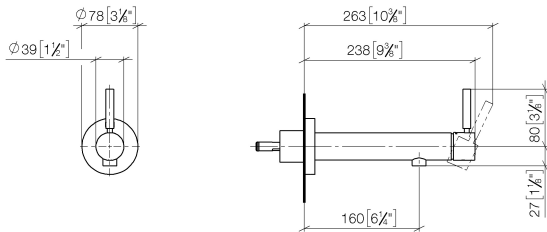
- Concealed wall mounting -**
- max. recess depth 103 mm
 - min. recess depth 78 mm

35 003 970 90

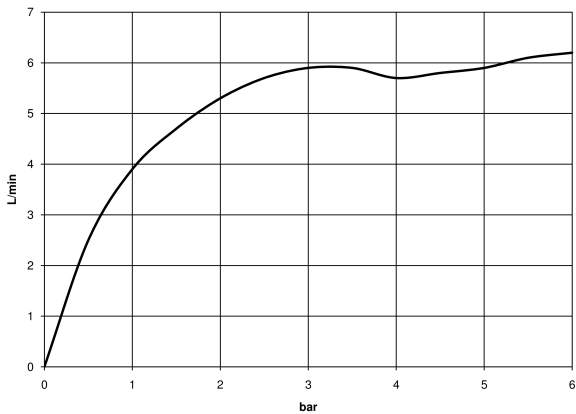
META Wall-mounted single-lever basin mixer without pop-up waste - Matte
Black

META

36 804 661
mm [inches]



Flow rate chart



Codes & Standards

DIN 4109	EN 817	ISO 3822	Scottish Water Byelaws
UK Water Supply Regulations	Ü-Zeichen		



META Wall-mounted single-lever basin mixer without pop-up waste - Matte Black

META

36 804 661

Certificates

DVGW_DW-
6512DN0

WRAS_2003

LGA_19

META Wall-mounted single-lever basin mixer without pop-up waste - Matte Black

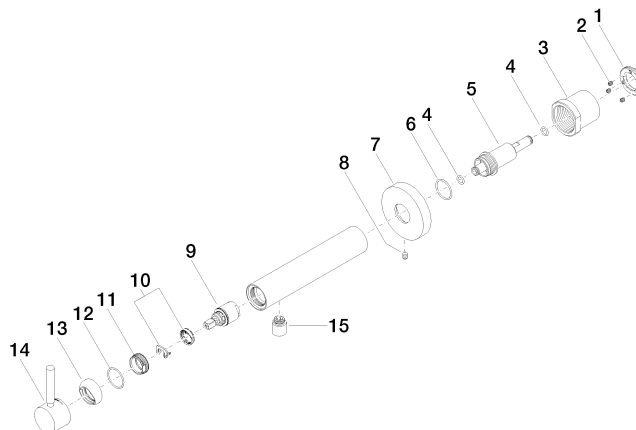
META

36 804 661

Product version up to 1/23/2020

Product version from 1/23/2020 to 4/2/2020

Product version from 4/2/2020





META Wall-mounted single-lever basin mixer without pop-up waste - Matte Black

META

36 804 661

Spare parts list

Product version up to 1/23/2020

Product version from 1/23/2020 to 4/2/2020

Product version from 4/2/2020

No.	Item Number	Name	Quantity used	Delivery time
	09 24 77 002 90	nut	18	2