








## LISSE Wall-mounted single-lever basin mixer without pop-up waste - Brushed Light Gold

LISSE

36 860 845



- 170mm projection
- fixed spout
- circular, air-enriched flow
- hole diameter spout 37 mm
- hole diameter single-lever mixer 57 mm
- rosette 78 x 78 mm
- max. flow 5.7 l/min
- lead-free
- This product can help a building meet the requirements of Green Building Rating Systems, e.g. LEED®, BREEAM®, DGNB
- WRAS 2107018

	Brushed Light Gold	36 860 845-27
	Chrome	36 860 845-00
	Brushed Platinum	36 860 845-06
	Dark Chrome	36 860 845-19
	Matte Black	36 860 845-33
	Brushed Chrome	36 860 845-93
	Brushed Dark Platinum	36 860 845-99

### Required miscellaneous



**Concealed wall-mounted single-lever mixer mixer on right -** 35 816 970 90  
 •NOTE:Not suitable for concealed installation.Connection by means of angle valves, mounted with screws to back wall.

### Recommended miscellaneous



**Basin Waste with knob for deck mounting 1 1/4" - Brushed Light Gold** 10 200 970-27

### Required miscellaneous



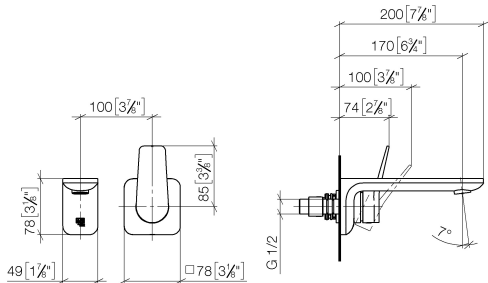
**Concealed wall-mounted single-lever mixer -** 35 860 970 90  
 •min. recess depth 80 mm  
 •max. recess depth 95 mm



LISSÉ Wall-mounted single-lever basin mixer without pop-up waste - Brushed Light Gold

LISSÉ

36 860 845  
mm [inches]



Flow rate chart



Codes & Standards

EN 817	NSF372	NSF61	Scottish Water Byelaws
--------	--------	-------	------------------------

UK Water Supply Regulations



## LISSE Wall-mounted single-lever basin mixer without pop-up waste - Brushed Light Gold

---

LISSE

36 860 845

Certificates

---

WRAS\_2107

IAPMO\_6397

IAPMO\_N-4976

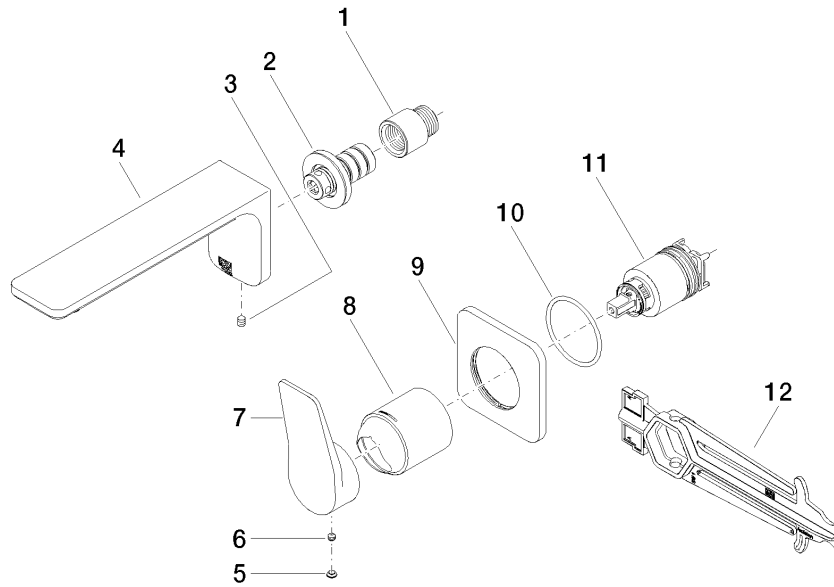
DVGW\_DW-  
6512DN0

**LISSE Wall-mounted single-lever basin mixer without pop-up waste - Brushed  
Light Gold**

LISSE

36 860 845

**Product version from 4/1/2024**





LISSE Wall-mounted single-lever basin mixer without pop-up waste - Brushed  
Light Gold

LISSE

36 860 845

**Spare parts list**

**Product version from 4/1/2024**

No.	Item Number	Name	Quantity used	Delivery time
	09 24 03 072 10 90	nipple	12	2