



MEM Wall-mounted single-lever basin mixer without pop-up waste - Brushed Platinum

36 861 782			
	<ul style="list-style-type: none"> • 207mm projection • fixed spout • rectangular, air-enriched flow • hole diameter spout 37 mm • hole diameter single-lever mixer 57 mm • rosette for spout 80 x 60mm • rosette for mixer 80 x 80mm • max. flow 5.7 l/min • lead-free • This product can help a building meet the requirements of Green Building Rating Systems, e.g. LEED®, BREEAM®, DGNB • WRAS 	<div>  Brushed Platinum </div>	36 861 782-06
		<div>  Chrome </div>	36 861 782-00
		<div>  Platinum </div>	36 861 782-08
		<div>  Dark Chrome </div>	36 861 782-19
		<div>  Brushed Durabrass (23kt Gold) </div>	36 861 782-28
		<div>  Brushed Champagne (22kt Gold) </div>	36 861 782-46
		<div>  Champagne (22kt Gold) </div>	36 861 782-47
		<div>  Brushed Dark Platinum </div>	36 861 782-99

Required miscellaneous

	Concealed wall-mounted single-lever mixer mixer on right -	35 816 970 90
	<ul style="list-style-type: none"> •NOTE:Not suitable for concealed installation.Connection by means of angle valves, mounted with screws to back wall. 	

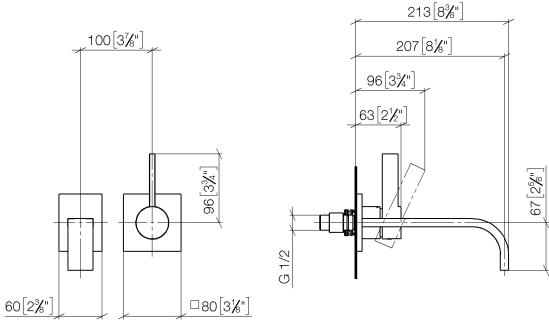
Required miscellaneous

	Concealed wall-mounted single-lever mixer -	35 860 970 90
	<ul style="list-style-type: none"> •max. recess depth mm •min. recess depth mm •mixer can be placed above, to the left or to the right of the spout. 	



MEM Wall-mounted single-lever basin mixer without pop-up waste - Brushed Platinum

36 861 782
mm [inches]



Flow rate chart



Codes & Standards

DIN 4109

EN 817

ISO 3822

Scottish Water
Byelaws

UK Water Supply
Regulations

Ü-Zeichen



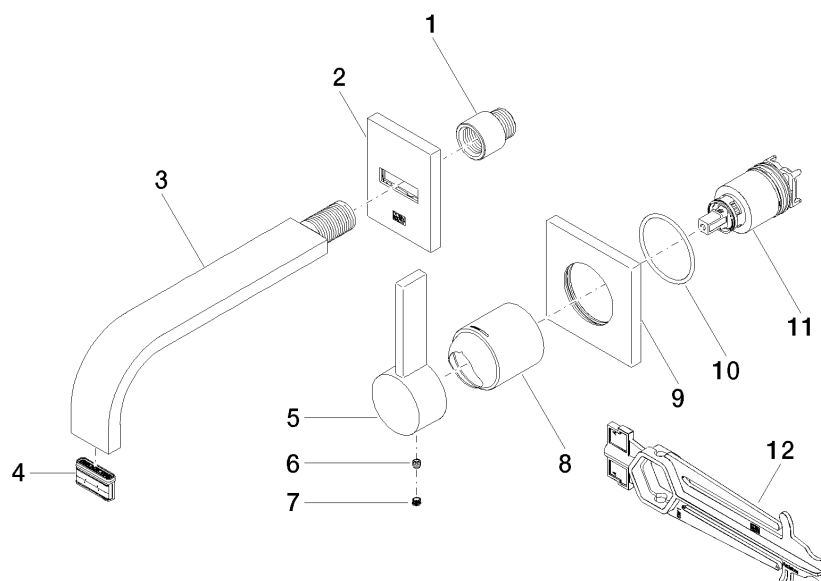
MEM Wall-mounted single-lever basin mixer without pop-up waste - Brushed
Platinum

36 861 782
Certificates

LGA_29	DVGW_DW- 6512DN0	WRAS_2107
--------	---------------------	-----------

MEM Wall-mounted single-lever basin mixer without pop-up waste - Brushed Platinum

36 861 782



Spare parts list

No.	Item Number	Name	Quantity used	Delivery time
1	09 24 03 072 10 90	nipple	1	2
2	90 27 78 038 00-06	rosette	1	10
3	04 28 22 149 10-06	spout	1	10
4	90 29 03 109 00 90	aerator	1	2
5	09 20 78 058-06	handle	1	10
6	90 31 11 030 00 90	pin	1	2
7	90 31 20 109 00 90	plug	1	2
8	09 11 02 288-06	cover	1	10
9	09 27 78 039-06	rosette	1	10
10	90 14 10 049 00 90	seal	1	2
11	90 15 05 064 01 90	cartridge	1	2
12	90 30 09 064 00 90	key	1	2