


Single sink - Stainless Steel

38 450 003



- under-mounted
 - 450 x 400 mm
 - sink depth 175 mm
 - suitable for base units 500 mm
 - radius 12 mm
- Drain and overflow set not included in the scope of supply. See Required miscellaneous.**
- Drain and overflow set not included in the scope of supply. See Required miscellaneous.

Required miscellaneous



Pop-up waste and overflow with electronic control - Stainless Steel

10 410 003-85

- 3½" electronic drain valve (TouchFlow)

Required miscellaneous




Pop-up waste and overflow with knob - Stainless Steel

10 405 003-85

- 3½" strainer waste valve

Required miscellaneous



Pop-up waste and overflow closable by hand - Stainless Steel

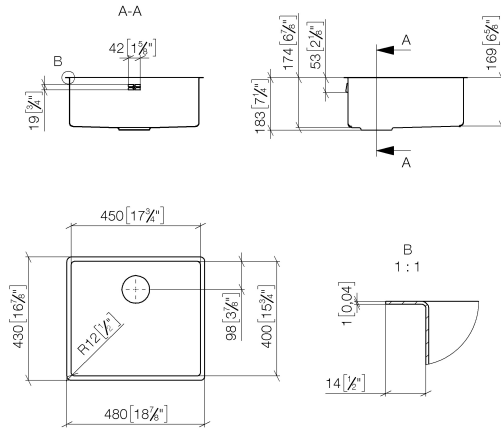
10 400 003-85

- 3½" drain valve closable by hand

Single sink - Stainless Steel

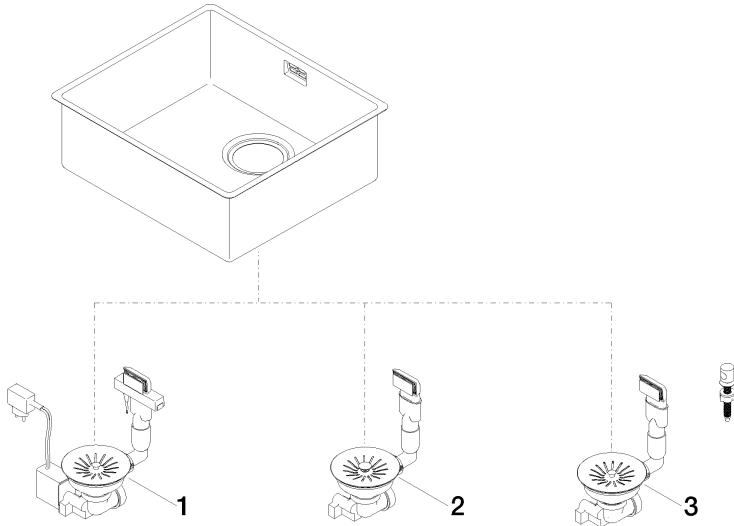
38 450 003

mm [inches]



Single sink - Stainless Steel

38 450 003



Spare parts list

| No. | Item Number | Name | Quantity used | Delivery time |
|-----|---------------|---|---------------|---------------|
| 1 | 10 410 003-85 | Pop-up waste and overflow with electronic control - Stainless Steel | 1 | 2 |
| 2 | 10 400 003-85 | Pop-up waste and overflow closable by hand - Stainless Steel | 1 | 2 |
| 3 | 10 405 003-85 | Pop-up waste and overflow with knob - Stainless Steel | 1 | 2 |