

# Single sink - Stainless Steel

38 500 003



- under-mounted
  - 500 x 400 mm
  - sink depth 175 mm
  - suitable for base units 550 mm
  - radius 12 mm
- Drain and overflow set not included in the scope of supply. See Required miscellaneous.**
- Drain and overflow set not included in the scope of supply. See Required miscellaneous.

## Required miscellaneous




**Pop-up waste and overflow with electronic control - Stainless Steel**

• 3½" electronic drain valve (TouchFlow)

10 410 003-85

## Required miscellaneous




**Pop-up waste and overflow with knob - Stainless Steel**

• 3½" strainer waste valve

10 405 003-85

## Required miscellaneous



**Pop-up waste and overflow closable by hand - Stainless Steel**

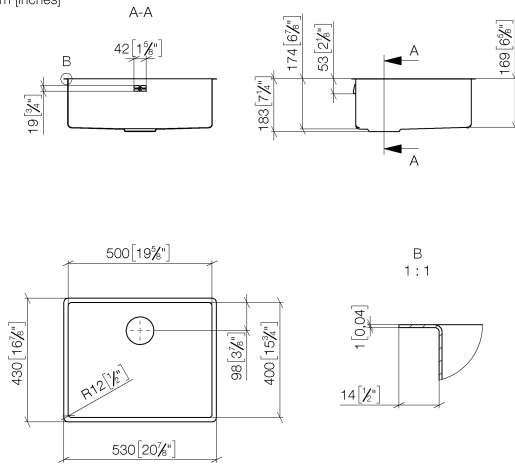
• 3½" drain valve closable by hand

10 400 003-85

## Single sink - Stainless Steel

38 500 003

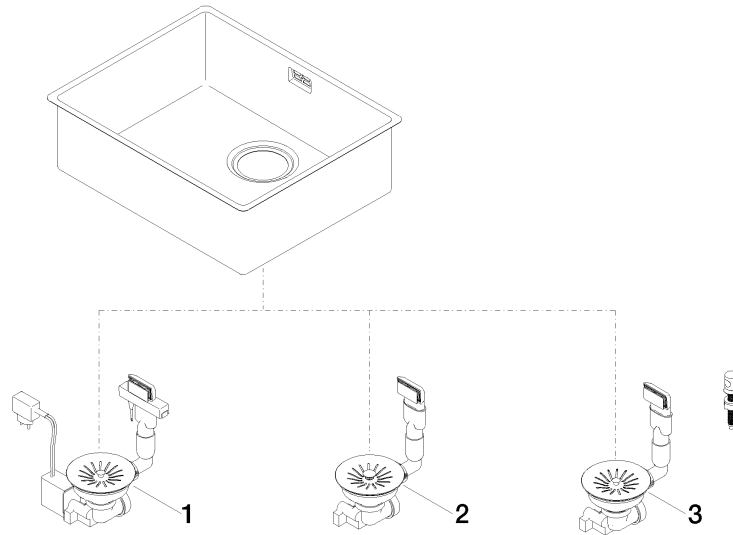
mm [inches]



## Single sink - Stainless Steel

---

38 500 003





Single sink - Stainless Steel

38 500 003

Spare parts list

No.	Item Number	Name	Quantity used	Delivery time
	10 410 003-85	Pop-up waste and overflow with electronic control - Stainless Steel	3	2