

TARA Tissue holder with cover - Brushed Champagne (22kt Gold)

TARA

83 510 892 Product version from 4/1/2024

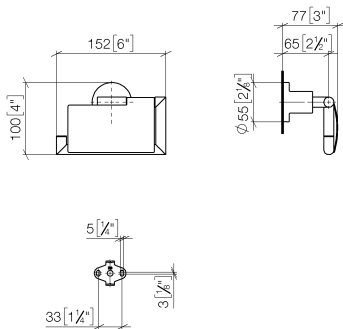


- width 152mm
- height 100 mm
- rosette Ø 55 mm
- 77mm projection

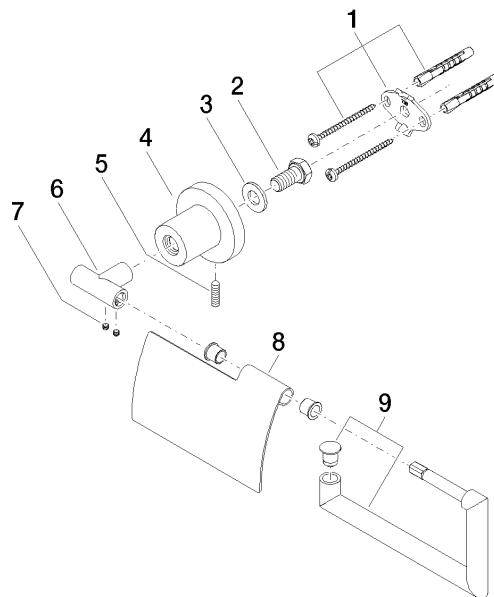
	Brushed Champagne (22kt Gold)	83 510 892-46
	Chrome	83 510 892-00
	Brushed Platinum	83 510 892-06
	Platinum	83 510 892-08
	Dark Chrome	83 510 892-19
	Brushed Durabronze (23kt Gold)	83 510 892-28
	Matte Black	83 510 892-33
	Brushed Dark Brass	83 510 892-39
	Brushed Bronze	83 510 892-42
	Champagne (22kt Gold)	83 510 892-47
	Brushed Chrome	83 510 892-93
	Brushed Dark Platinum	83 510 892-99

83 510 892 Product version from 4/1/2024

mm [inches]



Parts for other
finishes can be found
here: [Chrome](#)



Spare parts list

No.	Item Number	Name	Quantity used	Delivery time
	9 90 28 22 641 00-46	holder	1.00	30
	3 09 30 11 046 90	disc	1.00	2
	5 04 31 11 113 00 90	pin	1.00	2
	4 08 17 89 505-46	holder	1.00	30
	1 05 17 20 739 00 90	fixing set	1.00	2
	8 08 11 02 514-46	lid	1.00	30
	6 05 17 89 553 00-46	holder	1.00	30
	2 09 30 30 071 90	screw	1.00	2
	7 90 31 11 038 00 90	pin	2.00	2