

Bath cascade spout for wall mounting - Chrome

SERIES SPECIFIC

13 430 740 Product version from 9/1/2025



- 200mm projection
- cascade
- plate 180 mm x 60 mm
- hole diameter 40 mm
- 1/2" connection
- plug-link mounting
- max. flow 26.5 l/min at 3 bar flow pressure
- WRAS

	Chrome	13 430 740-00
	Brushed Platinum	13 430 740-06
	Platinum	13 430 740-08
	Dark Chrome	13 430 740-19
	Brushed Durabrass (23kt Gold)	13 430 740-28
	Matte Black	13 430 740-33
	Brushed Dark Brass	13 430 740-39
	Brushed Champagne (22kt Gold)	13 430 740-46
	Champagne (22kt Gold)	13 430 740-47
	Brushed Dark Platinum	13 430 740-99

Recommended miscellaneous



Concealed wall elbow -

35 085 970 90

- max. recess depth 163 mm
- min. recess depth 90 mm

Bath cascade spout for wall mounting - Chrome

SERIES SPECIFIC

13 430 740 Product version from 9/1/2025

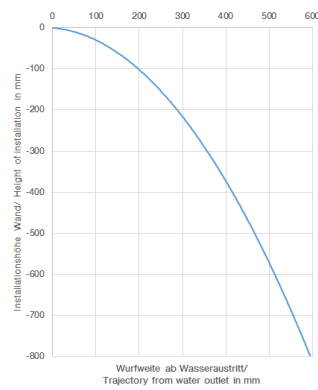
mm [inches]



Flow rate chart



Trajectory diagram



Codes & Standards

ASME A112.18.1	cUPC	DIN 4109	ISO 3822
----------------	------	----------	----------

Scottish Water Byelaws	UK Water Supply Regulations	Ü-Zeichen
---------------------------	--------------------------------	-----------



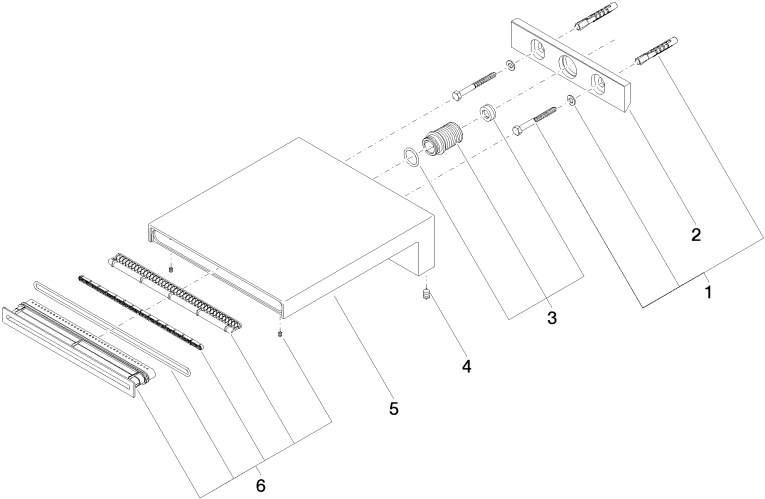
Bath cascade spout for wall mounting - Chrome

SERIES SPECIFIC

13 430 740 Product version from 9/1/2025

Certificates and sustainability

IAPMO_4976 LGA_19 WRAS_240502



Spare parts list

No.	Item Number	Name	Quantity used	Delivery time
5	09 11 74 042-00	spout	1.00	60
2	09 17 97 056 90	holder	1.00	2
6	90 29 03 059 00 90	insert	1.00	2
4	09 31 11 144 90	pin	2.00	2
3	90 24 05 008 00 90	nipple set	1.00	2
1	04 30 31 014 00 90	fixing set	1.00	2