

VAIA Single-hole basin mixer with pop-up waste - Chrome

VAIA

22 513 809 Product version from 4/1/2025

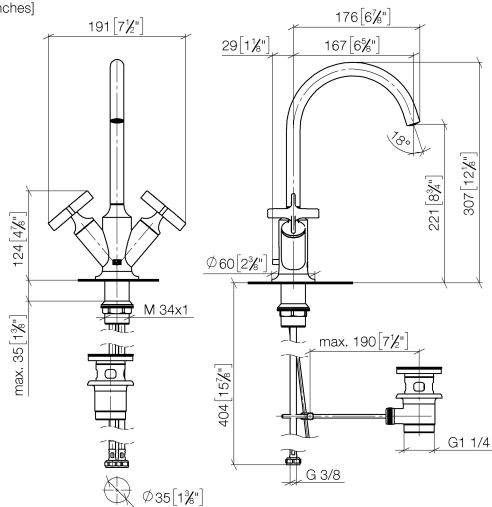


- 167mm projection
- pivotable spout 360°
- circular, air-enriched flow
- height of mixer 307 mm
- height up to aerator 221 mm
- hole diameter 35 mm
- rosette Ø 60 mm
- 2x screw-in M 10 x 1 pressure hose, leak-tested
- max. flow 5.7 l/min
- lead-free
- This product can help a building meet the requirements of Green Building Rating Systems, e.g. LEED®, BREEAM®, DGNB
- WRAS

Only suitable for basins with an overflow.

	Chrome	22 513 809-00
	Brushed Platinum	22 513 809-06
	Platinum	22 513 809-08
	Dark Chrome	22 513 809-19
	Brushed Durabronze (23kt Gold)	22 513 809-28
	Brushed Dark Brass	22 513 809-39
	Brushed Bronze	22 513 809-42
	Brushed Champagne (22kt Gold)	22 513 809-46
	Champagne (22kt Gold)	22 513 809-47
	Brushed Dark Platinum	22 513 809-99

mm [inches]



Flow rate chart



Codes & Standards

DIN 4109

ISO 3822

Scottish Water
Byelaws

UK Water Supply
Regulations

Ü-Zeichen



VAIA Single-hole basin mixer with pop-up waste - Chrome

VAIA

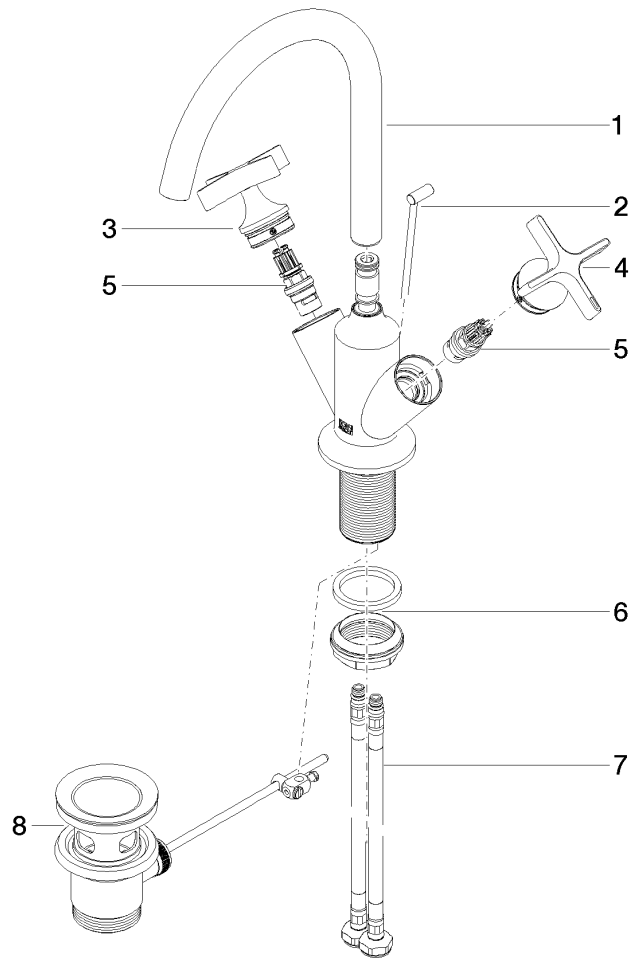
22 513 809 Product version from 4/1/2025

Certificates and sustainability

LGA_18

WRAS_240102

Parts for other
finishes can be found
here: Brushed
Platinum



Spare parts list

No.	Item Number	Name	Quantity used	Delivery time
6	04 23 10 044 07 90	fixing set	1.00	2
8	90 11 01 001 00-00	pop-up waste	1.00	10
2	04 20 89 035 80-00	pull-rod	1.00	10
7	04 30 04 100 00 90	hose	2.00	2
5	90 90 03 175 00 90	top	2.00	2
3	90 20 66 029 01-00	handle (hot)	1.00	10
4	90 20 66 028 00-00	handle (cold)	1.00	10
1	90 28 22 320 00-00	spout	1.00	10