

# Angle valve - Platinum

SERIES SPECIFIC

22 901 782    Product version from 3/10/2014 to 5/27/2021



- rosette 60 x 60 mm
- hose covering 200mm, for shortening
- 1/2" connection
- WRAS

|  |                               |               |
|--|-------------------------------|---------------|
|   | Platinum                      | 22 901 782-08 |
|   | Chrome                        | 22 901 782-00 |
|   | Brushed Platinum              | 22 901 782-06 |
|   | Dark Chrome                   | 22 901 782-19 |
|   | Brushed Durabrass (23kt Gold) | 22 901 782-28 |
|   | Matte Black                   | 22 901 782-33 |
|   | Brushed Champagne (22kt Gold) | 22 901 782-46 |
|   | Champagne (22kt Gold)         | 22 901 782-47 |
|   | Brushed Chrome                | 22 901 782-93 |
|  | Brushed Dark Platinum         | 22 901 782-99 |

22 901 782 Product version from 3/10/2014 to 5/27/2021

mm [inches]



### Flow rate chart



### Codes & Standards

Scottish Water  
Byelaws

UK Water Supply  
Regulations



## Angle valve - Platinum

SERIES SPECIFIC

22 901 782 Product version from 3/10/2014 to 5/27/2021

Certificates and sustainability

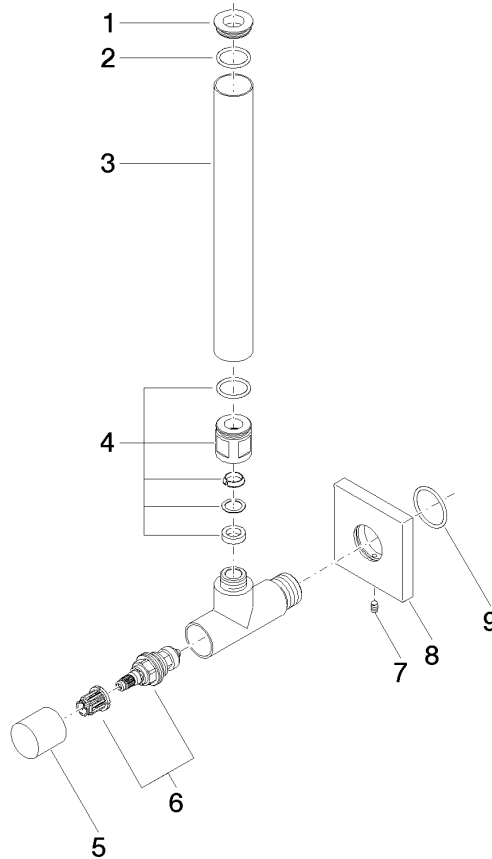
WRAS\_2205

## Angle valve - Platinum

SERIES SPECIFIC

22 901 782 Product version from 3/10/2014 to 5/27/2021

Parts for other  
finishes can be found  
here: [Chrome](#)



## Spare parts list

| No.  | Item Number        | Name               | Quantity used | Delivery time |
|--|--------------------|--------------------|---------------|---------------|
| 4  | 04 24 04 220 01-08 | threaded connector | 1.00          | -             |
| Spare part can no longer be ordered, please order the replacement item |                    |                    |               |               |
| 5  | 09 20 22 001-08    | handle             | 1.00          | 40            |
| 8  | 09 27 78 042-08    | rosette            | 1.00          | 40            |
| 7  | 09 31 11 048 90    | pin                | 1.00          | 2             |
| 1  | 09 21 22 000-08    | nipple             | 1.00          | 40            |
| 6  | 90 90 03 006 00 90 | top                | 1.00          | 2             |
| 3  | 09 28 22 020-08    | pipe               | 1.00          | 40            |
| 9  | 09 14 10 112 90    | seal               | 1.00          | 2             |
| 2  | 90 14 10 010 00 90 | seal               | 1.00          | 2             |