



- laminar flow
- 3/8" shower outlet
- cover plate 240 x 60 mm
- metal shower hose 1250mm with integrated anti-twist protection
- 1/2" connection
- plug-link mounting
- max. flow 7 l/min
- This product can help a building meet the requirements of Green Building Rating Systems, e.g. LEED®, BREEAM®, DGNB

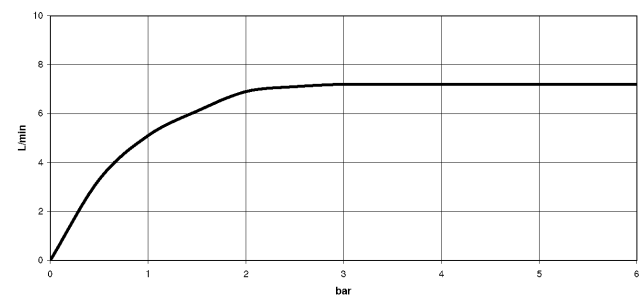
Intrinsic protection against back flow.

	Chrome	27 858 979-00
	Brushed Platinum	27 858 979-06
	Platinum	27 858 979-08
	Dark Chrome	27 858 979-19
	Brushed Light Gold	27 858 979-27
	Brushed Durabrass (23kt Gold)	27 858 979-28
	Matte Black	27 858 979-33
	Brushed Champagne (22kt Gold)	27 858 979-46
	Champagne (22kt Gold)	27 858 979-47
	Brushed Chrome	27 858 979-93
	Brushed Dark Platinum	27 858 979-99

mm [inches]



Flow rate chart



Codes & Standards

DIN 4109

EN 1717

ISO 3822

Ü-Zeichen



Affusion pipe with cover plate FlowReduce - Chrome

SERIES SPECIFIC

27 858 979 Product version from 4/1/2024

Certificates and sustainability

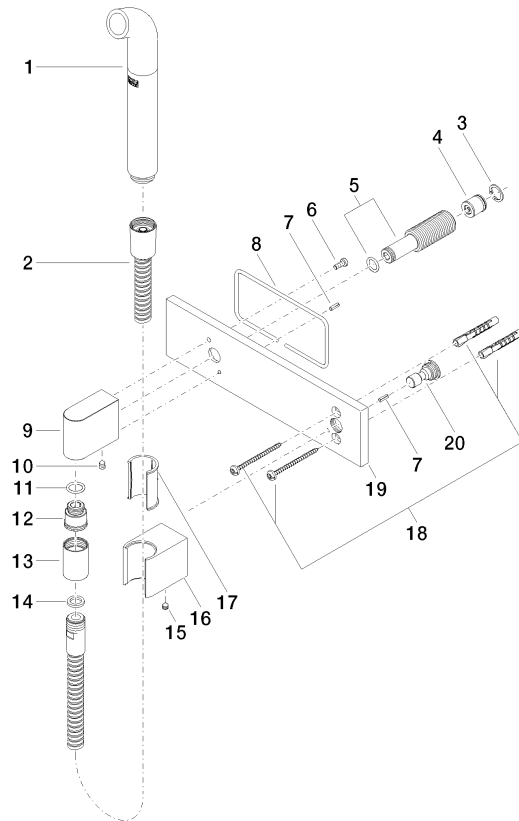
Belgaqua_24-007-2 LGA_38

Affusion pipe with cover plate FlowReduce - Chrome

SERIES SPECIFIC

27 858 979 Product version from 4/1/2024

Parts for other
finishes can be found
here: Brushed
Platinum



Spare parts list

No.	Item Number	Name	Quantity used	Delivery time
10	90 31 11 004 00 90	pin	1.00	2
4	90 23 01 147 00 90	back-flow preventer	1.00	2
20	09 24 03 073 90	nipple	1.00	2
15	90 31 11 112 00 90	pin	1.00	2
14	90 14 20 026 00 90	seal	1.00	2
16	09 17 20 044-00	holder	1.00	10
18	05 30 31 025 00 90	fixing set	1.00	2
12	09 24 03 107 20 90	nipple	1.00	2
13	90 21 02 069 00-00	cover	1.00	10
19	09 11 02 133-00	plate	1.00	10
2	90 30 02 072 00-00	Metal shower hose 1/2" x 3/8" x 1250 mm - Chrome	1.00	10
8	09 14 03 127 90	seal	1.00	2
6	09 14 10 008 90	seal	1.00	2
3	09 16 01 014 90	ring	1.00	2
1	04 12 11 073 01-00	spout	1.00	10
7	09 31 11 026 90	pin	2.00	2
5	90 24 03 212 00 90	nipple	1.00	2
9	09 11 03 046-00	connection	1.00	10
11	90 14 10 077 00 90	seal	1.00	2
17	09 18 40 078 90	sleeve	1.00	2