

Wall elbow - Chrome

SERIES SPECIFIC

28 450 980 Product version up to 7/6/2018



- 3/8" shower outlet
- rosette 60 x 60 mm
- 1/2" connection
- WRAS

Intrinsic protection against back flow.

	Chrome	28 450 980-00
	Brushed Platinum	28 450 980-06
	Platinum	28 450 980-08
	Durabrass (23kt Gold)	28 450 980-09
	Dark Chrome	28 450 980-19
	Light Gold	28 450 980-26
	Brushed Light Gold	28 450 980-27
	Brushed Durabrass (23kt Gold)	28 450 980-28
	Matte Black	28 450 980-33
	Brushed Bronze	28 450 980-42
	Brushed Champagne (22kt Gold)	28 450 980-46
	Champagne (22kt Gold)	28 450 980-47
	Brushed Chrome	28 450 980-93
	Brushed Dark Platinum	28 450 980-99

Recommended miscellaneous

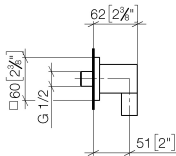
Concealed wall elbow -

35 085 970 90

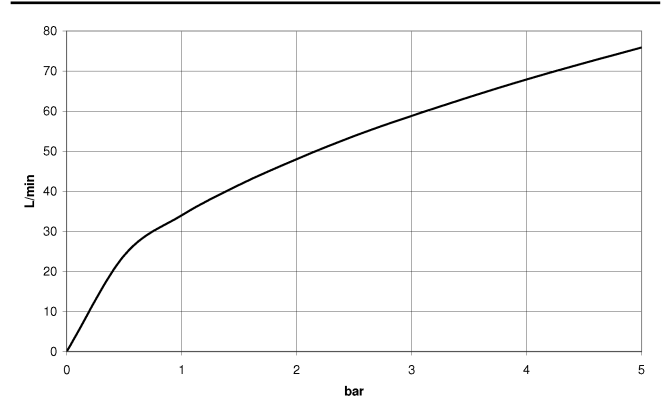


- max. recess depth 163 mm
- min. recess depth 90 mm

mm [inches]



Flow rate chart



Codes & Standards

ASME A112.18.1	cUPC	EN 1717	Scottish Water Byelaws
UK Water Supply Regulations			



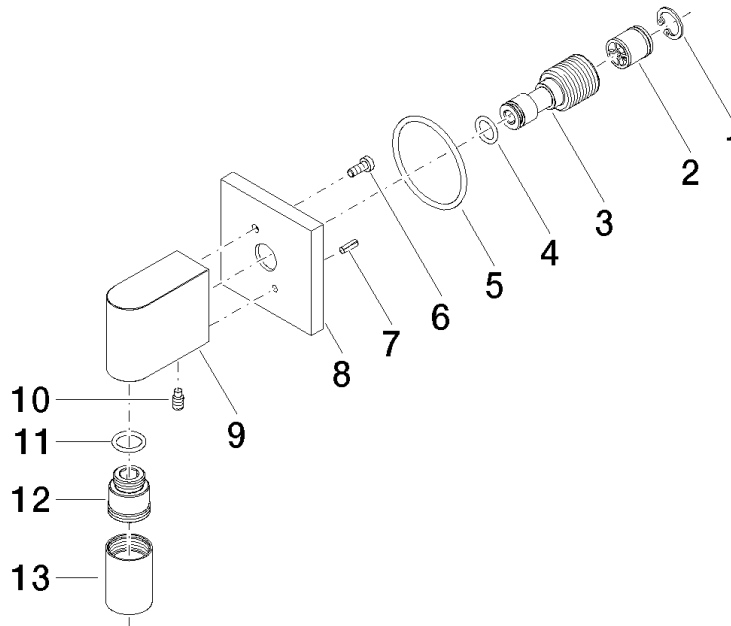
Wall elbow - Chrome

SERIES SPECIFIC

28 450 980 Product version up to 7/6/2018

Certificates and sustainability

Belgaqua_22_280_2	WRAS_2310	WRAS_1807	IAPMO_4976
-------------------	-----------	-----------	------------



Spare parts list

No.	Item Number	Name	Quantity used	Delivery time
1	09 16 01 014 90	ring	1.00	2
12	09 24 03 107 20 90	nipple	1.00	2
10	09 31 11 005 90	pin	1.00	2
6	09 30 30 054 90	screw	1.00	2
5	09 14 10 142 90	seal	1.00	2
3	09 24 03 116 20 90	nipple	1.00	2
4	09 14 10 008 90	seal	1.00	2
7	09 31 11 026 90	pin	1.00	2
9	09 11 03 046-00	connection	1.00	10
8	09 27 82 006-00	rosette	1.00	10
11	90 14 10 077 00 90	seal	1.00	2
2	90 23 01 141 00 90	back-flow preventer	1.00	2
13	90 21 02 069 00-00	cover	1.00	10