

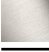





28 518 360



- spray head Ø 55mm
- ball-joint pivotable through 25° (in any direction)
- rain flow
- rosette Ø 55 mm
- 1/2" connection
- max. flow 5 l/min
- This product can help a building meet the requirements of Green Building Rating Systems, e.g. LEED®, BREEAM®, DGNB

	Platinum	28 518 360-08
	Chrome	28 518 360-00
	Brushed Platinum	28 518 360-06
	Durabrace (23kt Gold)	28 518 360-09
	Brushed Durabrace (23kt Gold)	28 518 360-28
	Brushed Dark Platinum	28 518 360-99

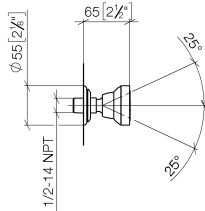
**Recommended miscellaneous**



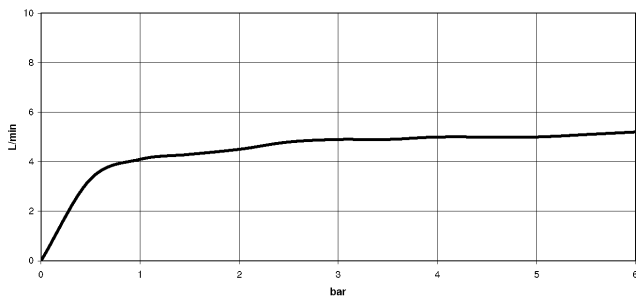
- Concealed wall elbow -** 35 085 970 90
- max. recess depth 163 mm
  - min. recess depth 90 mm

28 518 360

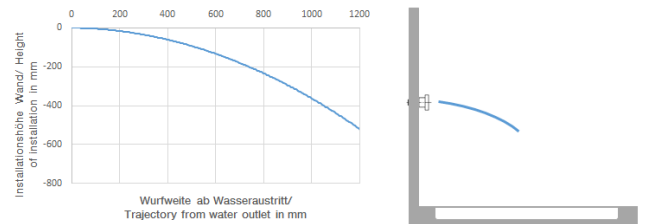
mm [inches]



Flow rate chart



Trajectory diagram



Codes & Standards

DIN 4109

ISO 3822

Scottish Water  
Byelaws

UK Water Supply  
Regulations

Ü-Zeichen



MADISON Body spray without volume control FlowReduce - Platinum

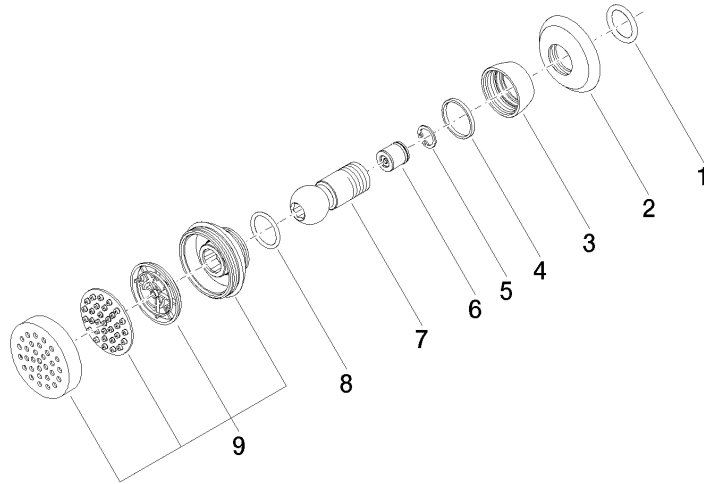
MADISON

28 518 360

Certificates

LGA\_38

WRAS\_240602





MADISON Body spray without volume control FlowReduce - Platinum

MADISON

28 518 360

**Spare parts list**

No.	Item Number	Name	Quantity used	Delivery time
	90 14 10 026 00 90	seal	9	2