

LULU Rain shower with wall fixing 300 x 240 mm - Brushed Platinum

LULU

28 786 710



Product version from 3/13/2017



- 450mm projection
- rain shower 300 x 240mm
- PURE RAIN, max. flow rate 20 l/min (at 3 bar)
- Function from: 12 l/min
- rosette 78 x 60 mm
- 1/2" connection
- with anti-scale system
- quick clearing
- WRAS

Product change as of 1st April 2024: max. flow

20l/min

	Brushed Platinum	28 786 710-06
	Chrome	28 786 710-00

Recommended miscellaneous



- Concealed wall elbow -

•max. recess depth 163 mm

•min. recess depth 90 mm

35 085 970 90

28 786 710 Product version from 3/13/2017

mm [inches]



### Flow rate chart



### Codes & Standards

DIN 4109

ISO 3822

Scottish Water  
Byelaws

UK Water Supply  
Regulations

Ü-Zeichen



## LULU Rain shower with wall fixing 300 x 240 mm - Brushed Platinum

LULU

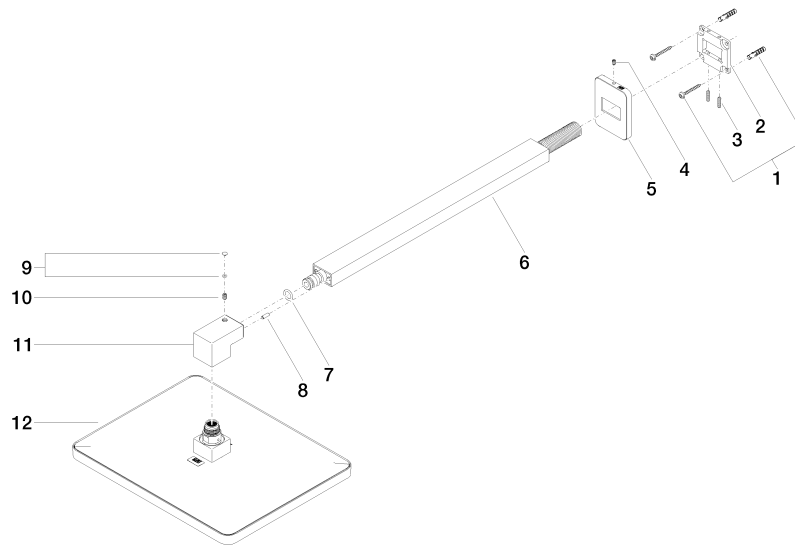
28 786 710 Product version from 3/13/2017

### Certificates and sustainability

LGA\_29

WRAS\_2212

LGA\_38



## Spare parts list

No.	Item Number	Name	Quantity used	Delivery time
	8 09 31 11 040 90	pin	1.00	2
	5 09 27 71 019-06	rosette	1.00	10
	9 90 31 20 087 00-06	plug	1.00	10
	3 09 31 11 084 90	pin	2.00	2
	10 09 31 11 036 90	pin	1.00	2
	2 09 30 11 160 90	disc	1.00	2
	6 04 28 22 247 20-06	pipe	1.00	10
	11 09 17 01 180-06	connection	1.00	10
	12 04 12 05 062 00-06	shower	1.00	10
	4 09 31 11 048 90	pin	1.00	2
	1 04 30 31 032 00 90	fixing set	1.00	2
	7 90 14 10 011 00 90	seal	1.00	2