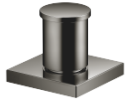


## Two-way diverter for bath rim or tile edge installation - Dark Chrome

SERIES SPECIFIC

29 140 670 Product version from 6/30/2015

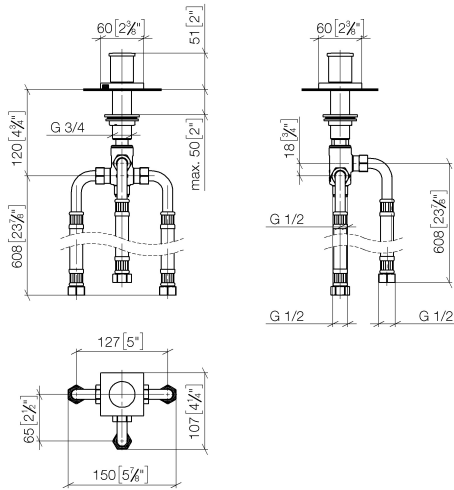


- automatic bath/shower diverter
- hole diameter 32 mm
- rosette 60 x 60 mm
- 1/2" connection
- max. flow 64.9 l/min at 3 bar flow pressure
- WRAS

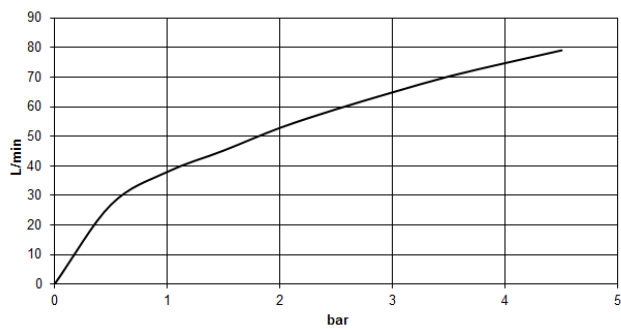
|  |                                     |               |
|--|-------------------------------------|---------------|
|   | Dark Chrome                         | 29 140 670-19 |
|   | Chrome                              | 29 140 670-00 |
|   | Brushed Platinum                    | 29 140 670-06 |
|   | Platinum                            | 29 140 670-08 |
|   | Brushed Light Gold                  | 29 140 670-27 |
|   | Brushed Durabronze<br>(23kt Gold)   | 29 140 670-28 |
|   | Matte Black                         | 29 140 670-33 |
|   | Brushed<br>Champagne (22kt<br>Gold) | 29 140 670-46 |
|   | Champagne (22kt<br>Gold)            | 29 140 670-47 |
|   | Brushed Chrome                      | 29 140 670-93 |
|  | Brushed Dark<br>Platinum            | 29 140 670-99 |

29 140 670 Product version from 6/30/2015

mm [inches]



### Flow rate chart



### Codes & Standards

ASME A112.18.1 cUPC DIN 4109 ISO 3822

### Ü-Zeichen



## Two-way diverter for bath rim or tile edge installation - Dark Chrome

SERIES SPECIFIC

29 140 670 Product version from 6/30/2015

### Certificates and sustainability

LGA\_29

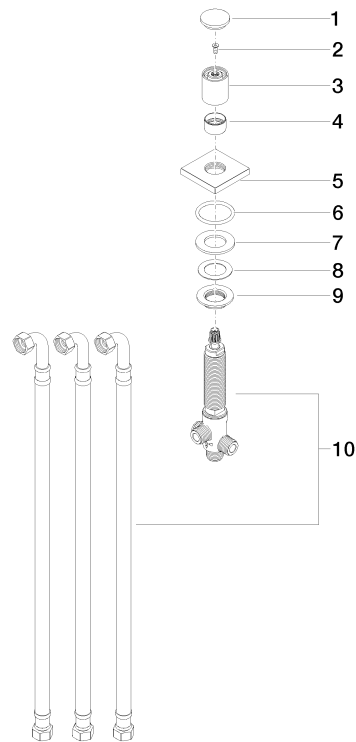
IAPMO\_4976

## Two-way diverter for bath rim or tile edge installation - Dark Chrome

SERIES SPECIFIC

29 140 670 Product version from 6/30/2015

Parts for other  
finishes can be found  
here: [Chrome](#)



### Spare parts list

| No. | Item Number        | Name     | Quantity used | Delivery time |
|-----|--------------------|----------|---------------|---------------|
| 7   | 09 14 05 014 90    | seal     | 1.00          | 2             |
| 4   | 09 16 01 012-19    | ring     | 1.00          | 20            |
| 8   | 09 14 40 002 90    | seal     | 1.00          | 2             |
| 1   | 09 20 71 003-19    | handle   | 1.00          | 20            |
| 5   | 09 27 67 006-19    | rosette  | 1.00          | 60            |
| 9   | 09 23 10 004 90    | nut      | 1.00          | 2             |
| 2   | 90 30 30 014 00 90 | screw    | 1.00          | 2             |
| 6   | 90 14 10 043 00 90 | seal     | 1.00          | 2             |
| 3   | 09 20 71 002-19    | handle   | 1.00          | 20            |
| 10  | 90 17 09 051 00 90 | diverter | 1.00          | 2             |