

30 805 809



- 500mm projection
- pivoting spout
- laminar flow
- cold water only
- max. flow 5.7 l/min at 3 bar flow pressure
- min. recess depth 125 mm
- max. recess depth 80 mm
- lead-free
- This product can help a building meet the requirements of Green Building Rating Systems, e.g. LEED®, BREEAM®, DGNB

| | | |
|---|-------------------------------|---------------|
|  | Brushed Platinum | 30 805 809-06 |
|  | Chrome | 30 805 809-00 |
|  | Platinum | 30 805 809-08 |
|  | Durabress (23kt Gold) | 30 805 809-09 |
|  | Dark Chrome | 30 805 809-19 |
|  | Brushed Durabress (23kt Gold) | 30 805 809-28 |
|  | Brushed Champagne (22kt Gold) | 30 805 809-46 |
|  | Champagne (22kt Gold) | 30 805 809-47 |
|  | Brushed Chrome | 30 805 809-93 |
|  | Brushed Dark Platinum | 30 805 809-99 |

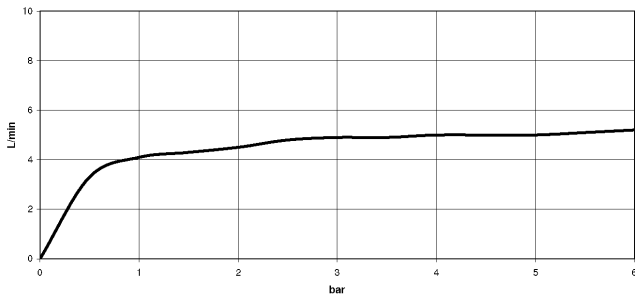
Required miscellaneous

POT FILLER Concealed wall elbow 35 087 970 90



- max. recess depth 125 mm
- min. recess depth 80 mm

Flow rate chart



Codes & Standards

DIN 4109

ISO 3822

Ü-Zeichen



VAIA POT FILLER Cold-water valve - Brushed Platinum

VAIA

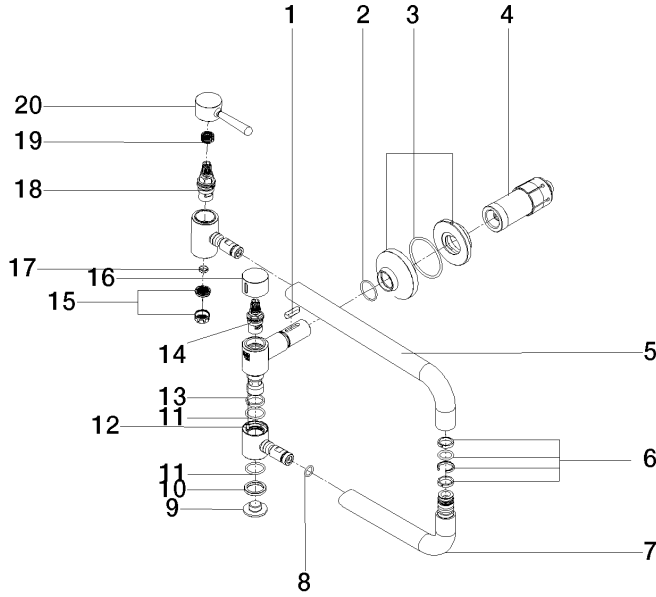
30 805 809

Certificates

LGA_29

30 805 809

Product version from 7/1/2023





VAIA POT FILLER Cold-water valve - Brushed Platinum

VAIA

30 805 809

Spare parts list

Product version from 7/1/2023

| No. | Item Number | Name | Quantity used | Delivery time |
|-----|--------------------|--------|---------------|---------------|
| | 90 16 04 001 00 90 | spring | 22 | 2 |