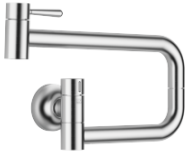


30 805 809



- 500mm projection
- pivoting spout
- laminar flow
- cold water only
- max. flow 5.7 l/min at 3 bar flow pressure
- min. recess depth 125 mm
- max. recess depth 80 mm
- lead-free
- This product can help a building meet the requirements of Green Building Rating Systems, e.g. LEED®, BREEAM®, DGNB

|   |                                |               |
|---|--------------------------------|---------------|
|   | Brushed Chrome                 | 30 805 809-93 |
|   | Chrome                         | 30 805 809-00 |
|   | Brushed Platinum               | 30 805 809-06 |
|   | Platinum                       | 30 805 809-08 |
|   | Durabronze (23kt Gold)         | 30 805 809-09 |
|   | Dark Chrome                    | 30 805 809-19 |
|   | Brushed Durabronze (23kt Gold) | 30 805 809-28 |
|   | Brushed Champagne (22kt Gold)  | 30 805 809-46 |
|   | Champagne (22kt Gold)          | 30 805 809-47 |
|  | Brushed Dark Platinum          | 30 805 809-99 |

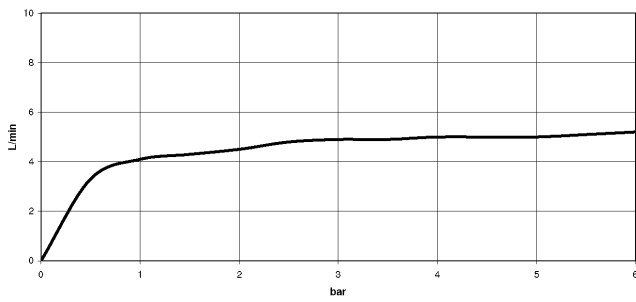
Required miscellaneous

**POT FILLER Concealed wall elbow** 35 087 970 90



- max. recess depth 125 mm
- min. recess depth 80 mm

Flow rate chart



Codes & Standards

DIN 4109

ISO 3822

Ü-Zeichen



## VAIA POT FILLER Cold-water valve - Brushed Chrome

---

VAIA

30 805 809

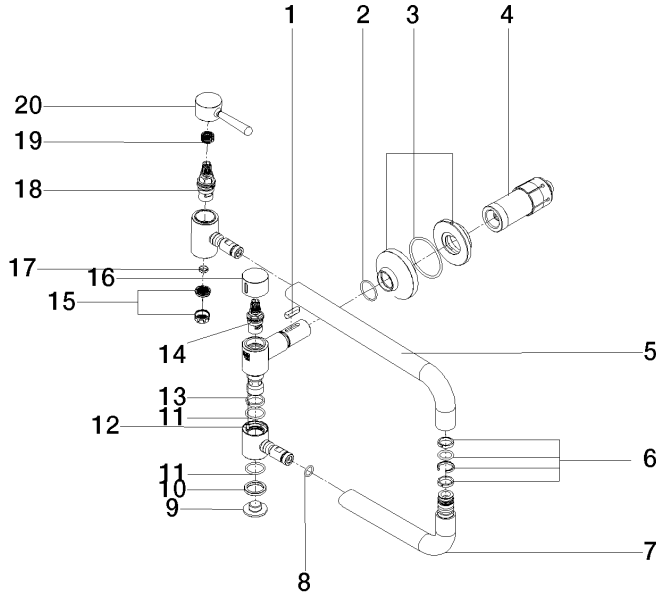
Certificates

---

LGA\_29

30 805 809

Product version from 7/1/2023





VAIA POT FILLER Cold-water valve - Brushed Chrome

VAIA

30 805 809

**Spare parts list**

**Product version from 7/1/2023**

| No. | Item Number        | Name   | Quantity used | Delivery time |
|-----|--------------------|--------|---------------|---------------|
|     | 90 16 04 001 00 90 | spring | 22            | 2             |