

IMO Single-lever basin mixer with raised base without pop-up waste - Brushed Platinum








IMO

33 537 671
Product version from 4/1/2024



- 170mm projection
- fixed spout
- rectangular, air-enriched flow
- height of mixer 298 mm
- height up to aerator 230 mm
- hole diameter 35 mm
- 2x screw-in M 10 x 1 pressure hose, leak-tested
- max. flow 4.6 l/min
- lead-free
- This product can help a building meet the requirements of Green Building Rating Systems, e.g. LEED®, BREEAM®, DGNB

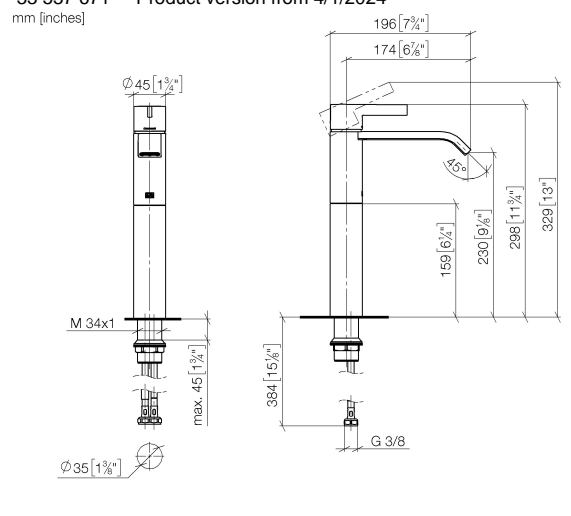
for use on countertop bowls

	Brushed Platinum	33 537 671-06
	Chrome	33 537 671-00
	Dark Chrome	33 537 671-19
	Brushed Light Gold	33 537 671-27
	Matte Black	33 537 671-33
	Brushed Chrome	33 537 671-93
	Brushed Dark Platinum	33 537 671-99

IMO Single-lever basin mixer with raised base without pop-up waste - Brushed Platinum

IMO

33 537 671 Product version from 4/1/2024
mm [inches]



Flow rate chart



Codes & Standards

DIN 4109

ISO 3822

Scottish Water
Byelaws

UK Water Supply
Regulations

Ü-Zeichen



IMO Single-lever basin mixer with raised base without pop-up waste - Brushed Platinum

IMO

33 537 671 Product version from 4/1/2024

Certificates and sustainability

LGA_19

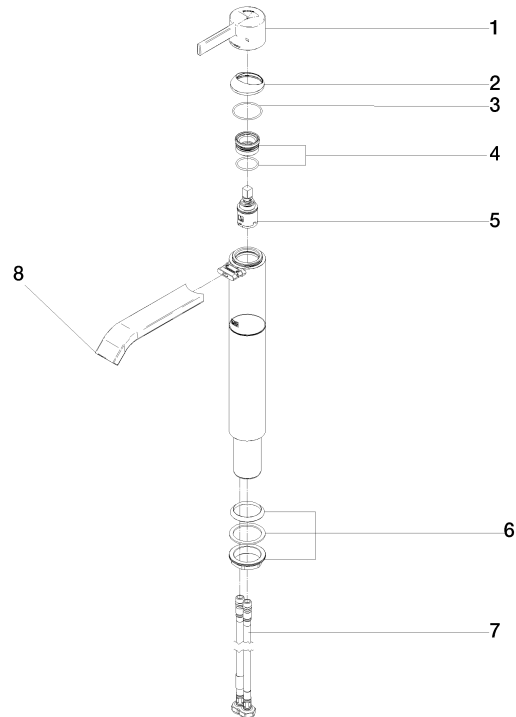
WRAS_250102

IMO Single-lever basin mixer with raised base without pop-up waste - Brushed Platinum

IMO

33 537 671 Product version from 4/1/2024

Parts for other finishes can be found here: [Chrome](#)



Spare parts list

No.	Item Number	Name	Quantity used	Delivery time
4	90 23 10 146 00 90	nut	1.00	2
2	90 28 30 059 00-06	cover	1.00	-
Spare part can no longer be ordered, please order the replacement item				
7	04 30 04 105 00 90	hose	2.00	2
5	90 15 05 042 00 90	cartridge	1.00	2
1	90 20 67 019 00-06	handle	1.00	10
6	04 23 10 044 07 90	fixing set	1.00	2
8	90 28 22 440 01-06	spout	1.00	10
3	09 14 10 102 90	seal	1.00	2