



DORNBACHT YARRE Single-lever bidet mixer with pop-up waste - Soft Black

DORNBACHT
YARRE

33 600 832 Product version from 1/1/2023



- 124mm projection
- ball-joint pivotable through 15° (in any direction)
- circular, air-enriched flow
- height of mixer 126 mm
- height up to aerator 90 mm
- hole diameter 35 mm
- 2x screw-in M 8 x 1 pressure hose, leak-tested
- max. flow 6.8 l/min
- WRAS

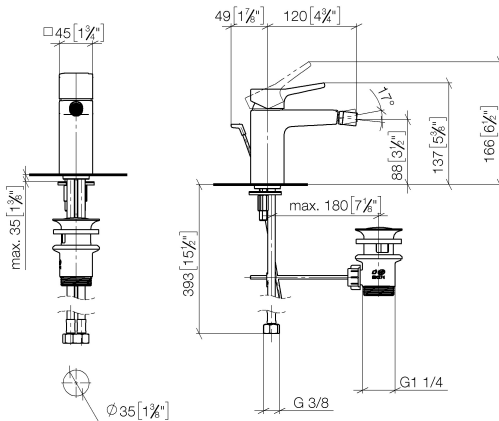
| | | |
|---|------------|---------------|
|  | Soft Black | 33 600 832-69 |
|  | Chrome | 33 600 832-00 |

DORNBRAUCHT YARRE Single-lever bidet mixer with pop-up waste - Soft Black

DORNBRAUCHT
YARRE

33 600 832 Product version from 1/1/2023

mm [inches]



Flow rate chart



Codes & Standards

| | | | |
|-----------------------------|-----------|-------------|------------------------|
| DIN 4109 | EN 817 | ISO 3822 | Scottish Water Byelaws |
| UK Water Supply Regulations | Ü-Zeichen | XP P 41-280 | |



DORNBRACHT YARRE Single-lever bidet mixer with pop-up waste - Soft Black

DORNBRACHT
YARRE

33 600 832 Product version from 1/1/2023

Certificates and sustainability

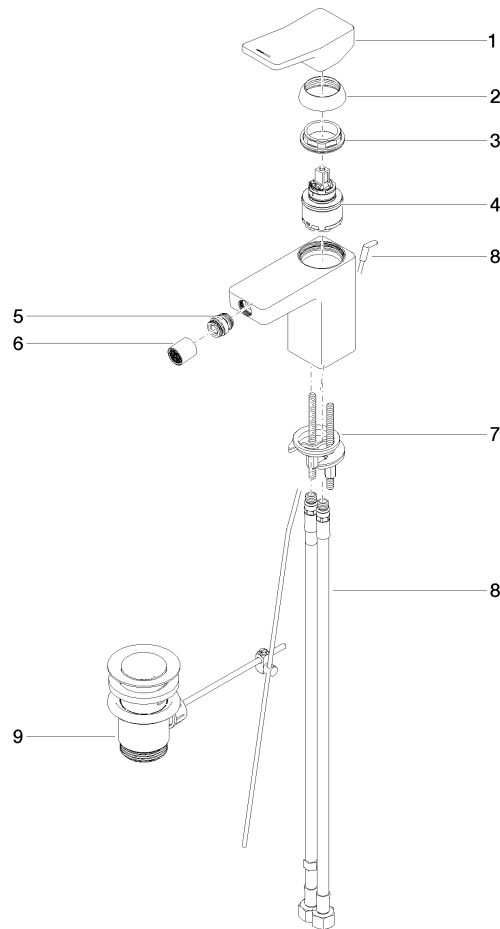
| | | | |
|--------|---------------|-------------|-----------------|
| AbP_10 | ACS_23 ACC NY | WRAS_240104 | DVGW_DW-6506DP0 |
|--------|---------------|-------------|-----------------|

DORNBACHT YARRE Single-lever bidet mixer with pop-up waste - Soft Black

DORNBACHT
YARRE

33 600 832 Product version from 1/1/2023

Parts for other
finishes can be found
here: [Chrome](#)



Spare parts list

| No. | Item Number | Name | Quantity used | Delivery time |
|-----|--------------------|--------------|---------------|---------------|
| 8 | 90 30 04 110 02 90 | hose | 1.00 | 2 |
| 2 | 90 21 02 400 00-69 | cover | 1.00 | 2 |
| 4 | 90 15 05 502 00 90 | cartridge | 1.00 | 2 |
| 9 | 90 11 01 200 00-69 | pop-up waste | 1.00 | 2 |
| 1 | 90 20 83 004 00-69 | handle | 1.00 | 2 |
| 3 | 90 23 10 140 00 90 | nut | 1.00 | 2 |
| 7 | 90 30 11 504 00 90 | fixing set | 1.00 | 2 |
| 5 | 90 23 01 178 00-69 | aerator | 1.00 | 60 |
| 6 | 90 21 40 008 00-69 | joint | 1.00 | 2 |