

TARA BAR TAP Single-lever mixer - Brushed Champagne (22kt Gold)

TARA

33 805 888 Product version from 1/1/2025



- 166mm projection
- pivotable spout 360°
- laminar flow
- height of mixer 302 mm
- height up to laminar flow regulator 185 mm
- hole diameter 35 mm
- max. flow 8.3 l/min at 3 bar flow pressure
- lead-free
- This product can help a building meet the requirements of Green Building Rating Systems, e.g. LEED®, BREEAM®, DGNB
- WRAS

	Brushed Champagne (22kt Gold)	33 805 888-46
	Chrome	33 805 888-00
	Brushed Platinum	33 805 888-06
	Platinum	33 805 888-08
	Durabrass (23kt Gold)	33 805 888-09
	Dark Chrome	33 805 888-19
	Brushed Durabrass (23kt Gold)	33 805 888-28
	Matte Black	33 805 888-33
	Brushed Bronze	33 805 888-42
	Champagne (22kt Gold)	33 805 888-47
	Brushed Chrome	33 805 888-93
	Brushed Dark Platinum	33 805 888-99

Recommended miscellaneous

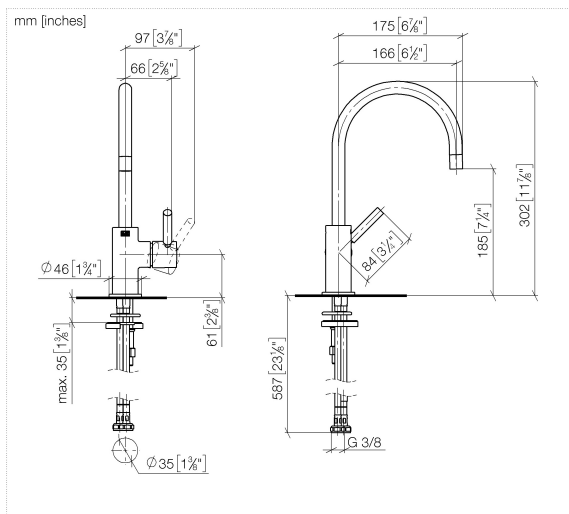
Dispenser with rosette - Brushed Champagne (22kt Gold) 82 444 970-46



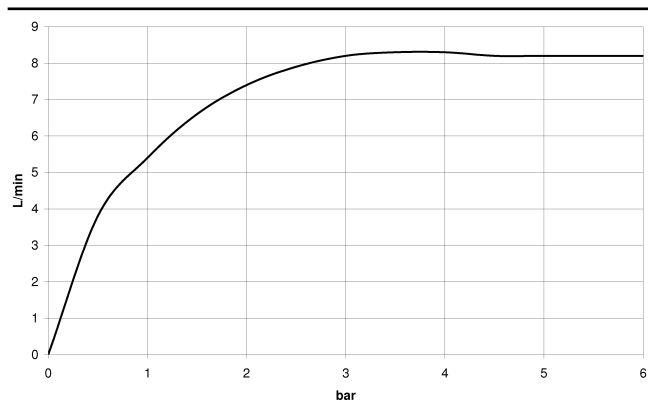
Recommended miscellaneous

Strainer waste with control handle - Brushed Champagne (22kt Gold) 10 710 970-46





Flow rate chart



Codes & Standards

DIN 4109

ISO 3822

Scottish Water
Byelaws

UK Water Supply
Regulations

Ü-Zeichen



TARA BAR TAP Single-lever mixer - Brushed Champagne (22kt Gold)

TARA

33 805 888 Product version from 1/1/2025

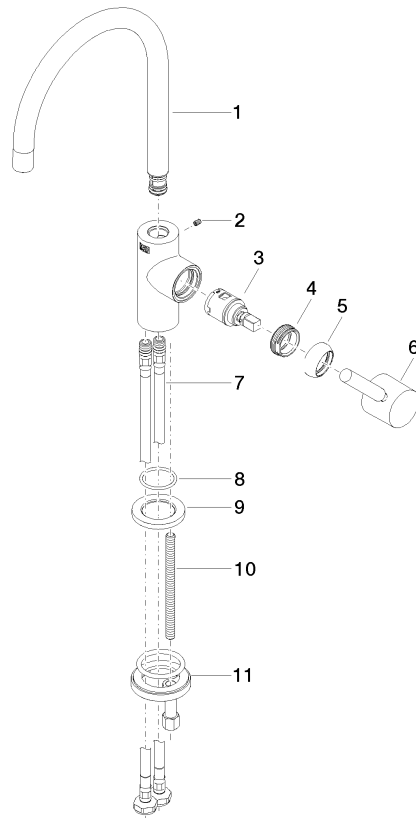
Certificates and sustainability

LGA_38

WRAS_240102

33 805 888 Product version from 1/1/2025

Parts for other
finishes can be found
here: [Chrome](#)



Spare parts list

No.	Item Number	Name	Quantity used	Delivery time
11	04 30 11 038 64 90	fixing set	1.00	2
7	04 30 04 105 00 90	hose	2.00	2
9	09 27 85 001-46	rosette	1.00	60
10	09 31 11 012 90	pin	1.00	2
4	09 24 04 266 90	nut	1.00	2
2	09 31 11 008 90	pin	1.00	2
6	90 20 66 003 00-46	handle	1.00	30
5	09 28 30 021-46	cover	1.00	60
3	90 15 05 042 00 90	cartridge	1.00	2
1	90 28 22 393 00-46	spout	1.00	30
8	09 14 10 118 90	seal	1.00	2