

TARA ULTRA PIVOT Single-lever mixer - Chrome

TARA ULTRA

33 845 875 Product version from 3/11/2013 to 10/27/2020



- 552mm projection
- pivotable spout 360°
- air-enriched flow
- height of mixer 372 mm
- height up to aerator 290 mm
- rosette 55 mm
- hole diameter 30 mm
- max. flow 8 l/min at 3 bar flow pressure
- lead-free
- This product can help a building meet the requirements of Green Building Rating Systems, e.g. LEED®, BREEAM®, DGNB

	Chrome	33 845 875-00
	Brushed Platinum	33 845 875-06
	Platinum	33 845 875-08
	Durabronze (23kt Gold)	33 845 875-09
	Dark Chrome	33 845 875-19
	Brushed Durabronze (23kt Gold)	33 845 875-28
	Brushed Bronze	33 845 875-42
	Brushed Champagne (22kt Gold)	33 845 875-46
	Champagne (22kt Gold)	33 845 875-47
	Brushed Chrome	33 845 875-93
	Brushed Dark Platinum	33 845 875-99

Recommended miscellaneous

Strainer waste with control handle - Chrome 10 710 970-00



Recommended miscellaneous

Dispenser with rosette - Chrome 82 444 970-00



33 845 875 Product version from 3/11/2013 to 10/27/2020



Flow rate chart



Codes & Standards

DIN 4109

Executive Order
no. 1007

ISO 3822

Ü-Zeichen



TARA ULTRA PIVOT Single-lever mixer - Chrome

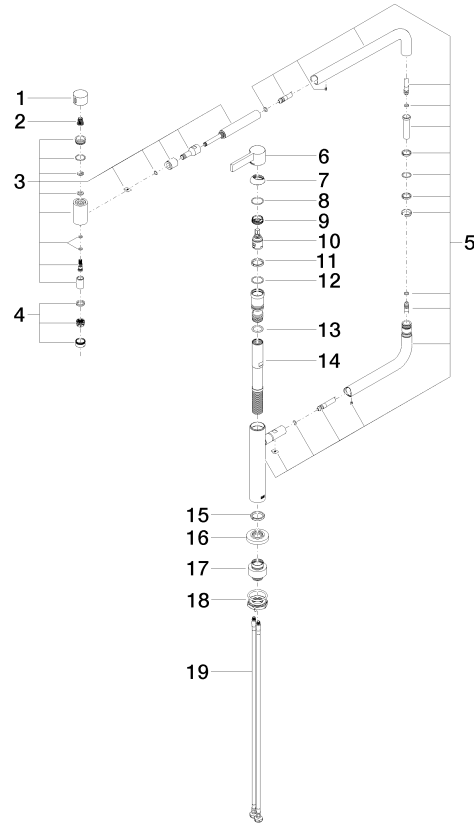
TARA ULTRA

33 845 875 Product version from 3/11/2013 to 10/27/2020

Certificates and sustainability

LGA_28

GDV_0400



Spare parts list

No.	Item Number	Name	Quantity used	Delivery time
	11 09 28 10 156 90	ring	1.00	2
	19 04 30 04 101 00 90	hose	2.00	2
	4 90 23 01 026 07-00	aerator	1.00	10
	1 09 20 62 025-00	handle	1.00	10
	16 09 27 87 033-00	rosette	1.00	10
	18 04 30 11 085 87 90	fixing set	1.00	2
	14 09 30 01 126 90	connection	1.00	2
	9 09 24 04 266 90	nut	1.00	2
	8 09 14 10 091 90	seal	1.00	2
	17 12 845 970 90	Extension set -	1.00	2
	10 90 15 05 042 00 90	cartridge	1.00	2
	5 90 28 22 257 00-00	joint	1.00	10
	15 09 28 10 159 90	ring	1.00	2
	6 90 20 87 004 00-00	handle	1.00	10
	13 09 14 10 081 90	seal	1.00	2
	3 90 19 87 001 00-00	spout	1.00	10
	2 90 12 12 002 00 90	fixing cap	1.00	2
	7 09 28 30 013-00	cover	1.00	10
	12 90 14 10 063 00 90	seal	1.00	2