

TARA Profi single-lever mixer - Chrome








TARA

33 880 888

Product version from 5/31/2010 to 7/23/2018



- 200mm projection
  - pivotable spout 360°
  - air-enriched flow and spray flow
  - height of mixer 415 mm
  - test
  - height up to aerator 275 mm
  - hole diameter 35 mm
  - sprayface with anti-scaling system
  - max. flow 7 l/min at 3 bar flow pressure
  - lead-free
  - This product can help a building meet the requirements of Green Building Rating Systems, e.g. LEED®, BREEAM®, DGNB
- Intrinsic protection against back flow.

|   |                       |               |
|---|-----------------------|---------------|
|  | Chrome                | 33 880 888-00 |
|  | Brushed Platinum      | 33 880 888-06 |
|  | Platinum              | 33 880 888-08 |
|  | Dark Chrome           | 33 880 888-19 |
|  | Brushed Bronze        | 33 880 888-42 |
|  | Brushed Chrome        | 33 880 888-93 |
|  | Brushed Dark Platinum | 33 880 888-99 |

Recommended miscellaneous

Dispenser with rosette - Chrome


82 444 970-00



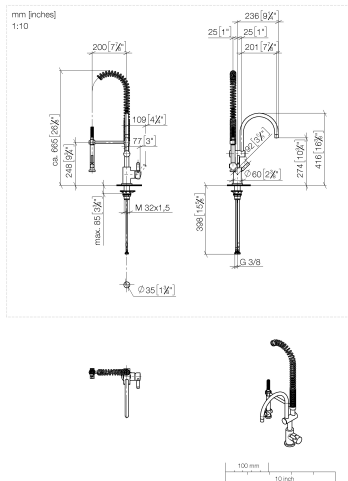
Recommended miscellaneous

Strainer waste with control handle - Chrome

10 710 970-00



33 880 888 Product version from 5/31/2010 to 7/23/2018



Flow rate chart



## Codes & Standards

EN 1717



## TARA Profi single-lever mixer - Chrome

---

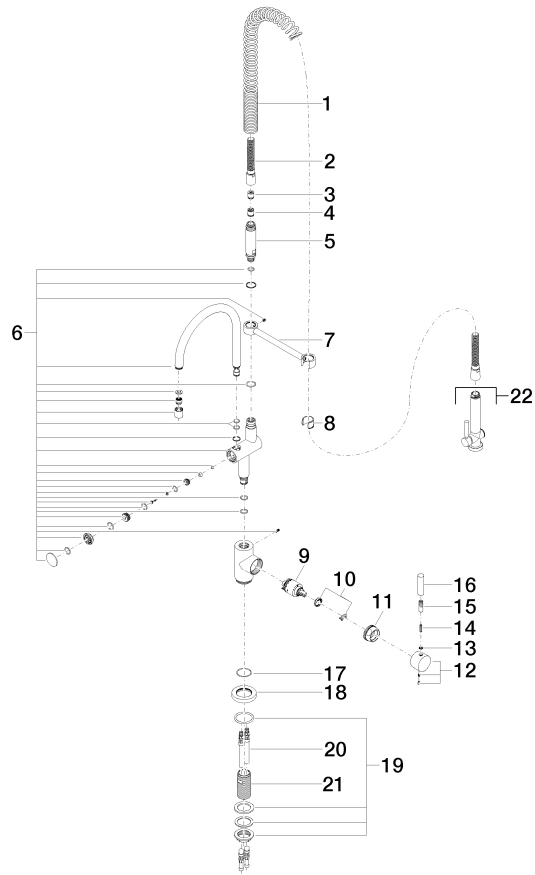
TARA

33 880 888 Product version from 5/31/2010 to 7/23/2018

### Certificates and sustainability

---

Belgaqua\_21-027-2





## TARA Profi single-lever mixer - Chrome

TARA

33 880 888 Product version from 5/31/2010 to 7/23/2018

### Spare parts list

| No. | Item Number        | Name                | Quantity used | Delivery time |
|-----|--------------------|---------------------|---------------|---------------|
| 16  | 09 20 62 005-00    | handle              | 1.00          | 10            |
| 20  | 04 30 04 016 00 90 | hose                | 2.00          | 60            |
| 7   | 04 17 20 014 00-00 | holder              | 1.00          | 10            |
| 11  | 09 24 04 107-00    | nut                 | 1.00          | 10            |
| 3   | 09 23 01 046 90    | back-flow preventer | 1.00          | 2             |
| 6   | 90 19 88 019 00-00 | spout               | 1.00          | 10            |
| 19  | 04 23 10 009 02 90 | fixing set          | 1.00          | 2             |
| 5   | 09 30 01 067 10-00 | adaptor             | 1.00          | 10            |
| 14  | 09 31 11 010 90    | pin                 | 1.00          | 2             |
| 17  | 09 14 10 102 90    | seal                | 1.00          | 2             |
| 12  | 90 20 88 040 00-00 | handle              | 1.00          | 10            |
| 21  | 09 30 01 010 90    | adaptor             | 1.00          | 2             |
| 1   | 09 16 02 034 90    | spring              | 1.00          | 2             |
| 18  | 09 28 10 055-00    | rosette             | 1.00          | 10            |
| 9   | 90 15 05 065 00 90 | cartridge           | 1.00          | 2             |
| 4   | 90 23 01 141 00 90 | back-flow preventer | 1.00          | 2             |
| 13  | 90 30 11 032 00 90 | disc                | 1.00          | 2             |
| 10  | 90 28 10 148 00 90 | accessories         | 1.00          | 2             |
| 22  | 90 12 11 097 11-00 | shower              | 1.00          | 10            |
| 2   | 90 30 02 065 00-00 | hose                | 1.00          | 10            |
| 8   | 90 18 40 035 00 90 | sleeve              | 1.00          | 2             |
| 15  | 90 24 04 048 00-00 | nipple              | 1.00          | 10            |