






DORNBRACHT PIUR Single-lever mixer - Brushed Nickel

DORNBRACHT

33 900 210



- 195mm projection
- max. flow 6.7 l/min at 3 bar flow pressure
- pivotable spout 360°
- air-enriched flow
- WRAS

	Brushed Nickel	33 900 210-70
	Chrome	33 900 210-00
	Soft Black	33 900 210-69

The graph shows the function $f(x) = 8 - 2e^{-x/2}$ for $x \in [0, 6]$. The x-axis is labeled 'bar' and the y-axis is labeled 'Länge'. The curve starts at the origin (0,0) and increases, approaching a horizontal asymptote at $y=8$. The curve is concave down, indicating a decreasing rate of growth.

DIN 4109	EN 817	ISO 3822	Scottish Water Byelaws
UK Water Supply Regulations	Ü-Zeichen	XP P 41-280	



DORNBRACHT PIUR Single-lever mixer - Brushed Nickel

DORNBRACHT
PIUR

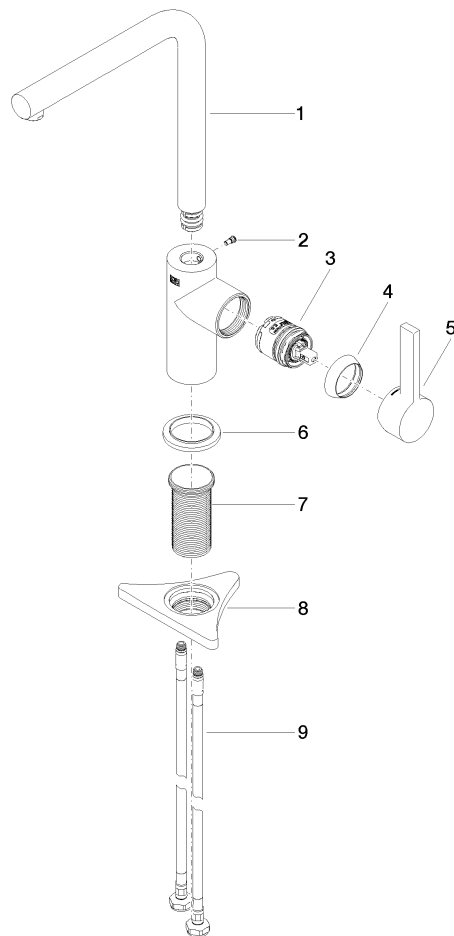
33 900 210

Certificates and sustainability

ACS_23 ACC NY	AbP_10	WRAS_2311	DVGW_DW-6506DO0
---------------	--------	-----------	-----------------

33 900 210

Parts for other
finishes can be found
here: [Chrome](#)



Spare parts list

No.	Item Number	Name	Quantity used	Delivery time
9	04 30 04 101 00 90	hose	1.00	2
3	90 15 05 060 00 90	cartridge	1.00	2
4	90 28 30 011 00-70	cover	1.00	2
7	90 30 01 200 00 90	shaft	1.00	2
6	90 27 21 001 00-70	rosette	1.00	2
1	90 28 22 380 00-70	spout	1.00	2
5	90 20 21 001 00-70	handle	1.00	2
8	90 23 10 003 00 90	fixing set	1.00	2
2	90 30 30 100 00 90	screw	1.00	2