



- shower with fixed riser projection 452mm
- overhead shower: rain flow
- rain shower Ø 300 mm
- rain shower with anti-scale system
- max. rainshower flow 14 l/min
- Function from: 10 l/min
- rotary diverter with volume control and shut-off function
- slide-on rosettes Ø 70 mm
- height of fittings up to rain shower (bottom edge) 964mm
- height of fittings up to top edge of elbow 1267mm
- gauge 150 mm - 13 mm
- metal shower hose 1750mm with integrated anti-twist protection
- 1/2" connection
- slide bar
- Pipe diameter 23.5 mm

This article does not include a hand shower!
Intrinsic protection against back flow.

| | | |
|--|--------------------------------|---------------|
|  | Chrome | 34 460 809-00 |
|  | Brushed Platinum | 34 460 809-06 |
|  | Platinum | 34 460 809-08 |
|  | Dark Chrome | 34 460 809-19 |
|  | Brushed Durabronze (23kt Gold) | 34 460 809-28 |
|  | Brushed Dark Brass | 34 460 809-39 |
|  | Brushed Bronze | 34 460 809-42 |
|  | Brushed Champagne (22kt Gold) | 34 460 809-46 |
|  | Champagne (22kt Gold) | 34 460 809-47 |
|  | Brushed Dark Platinum | 34 460 809-99 |



Flow rate chart



Codes & Standards

DIN 4109

EN 1717

ISO 3822

Ü-Zeichen



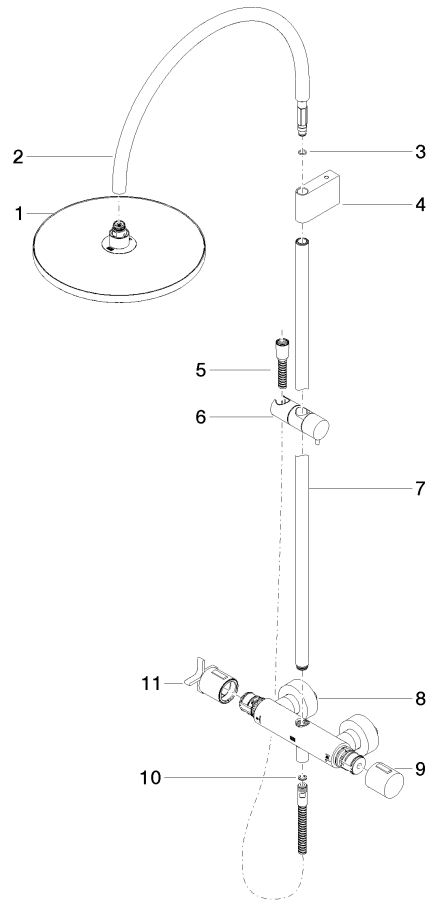
VAIA Shower pipe with shower thermostat without hand shower - Chrome

VAIA

34 460 809 Product version from 4/1/2025

Certificates and sustainability

Belgaqua_24-006-2 LGA_38



Spare parts list

| No. | Item Number | Name | Quantity used | Delivery time |
|-----|--------------------|--|---------------|---------------|
| 10 | 90 14 20 026 00 90 | seal | 1.00 | 2 |
| 1 | 04 12 05 091 00-00 | shower | 1.00 | 10 |
| 5 | 28 322 970-00 | Metal shower hose 1/2" x 3/8" x 1750 mm - Chrome | 1.00 | 2 |
| 3 | 09 14 10 008 90 | seal | 1.00 | 2 |
| 4 | 90 17 11 150 00-00 | holder | 1.00 | 10 |
| 6 | 12 570 970-00 | Slide unit - Chrome | 1.00 | 10 |
| 2 | 04 28 22 346 00-00 | pipe | 1.00 | 10 |
| 8 | 04 17 01 250 00-00 | connection | 1.00 | 10 |
| 11 | 90 17 33 030 00-00 | handle | 1.00 | 10 |
| 7 | 90 28 22 349 00-00 | pipe | 1.00 | 10 |
| 9 | 90 17 33 015 00-00 | handle | 1.00 | 10 |