

Wall valve 1/2" -

SERIES-VARIOUS

35 607 970 90



- red brass, lead-free
- female thread 1/2" connection
- 1x female thread 1/2" outlet
- dust cover
- anti-water packing
- soundproofing
- suitable for xGRID (when using installation track + 12 mm recess depth)
- WRAS

Required miscellaneous

Leak protection 1/2" -

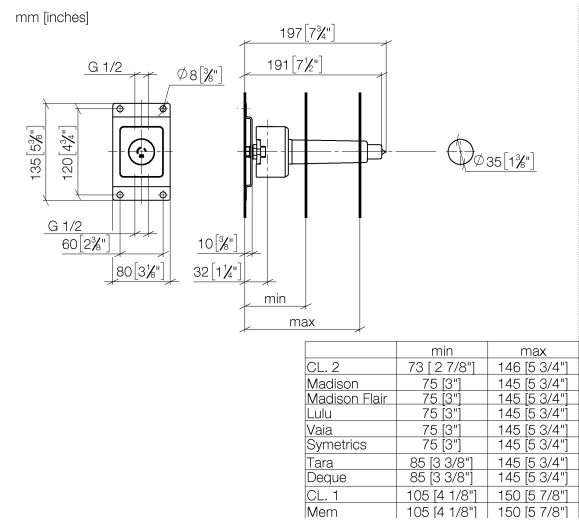
12 010 970 90



Wall valve 1/2" -

SERIES-VARIOUS

35 607 970 90



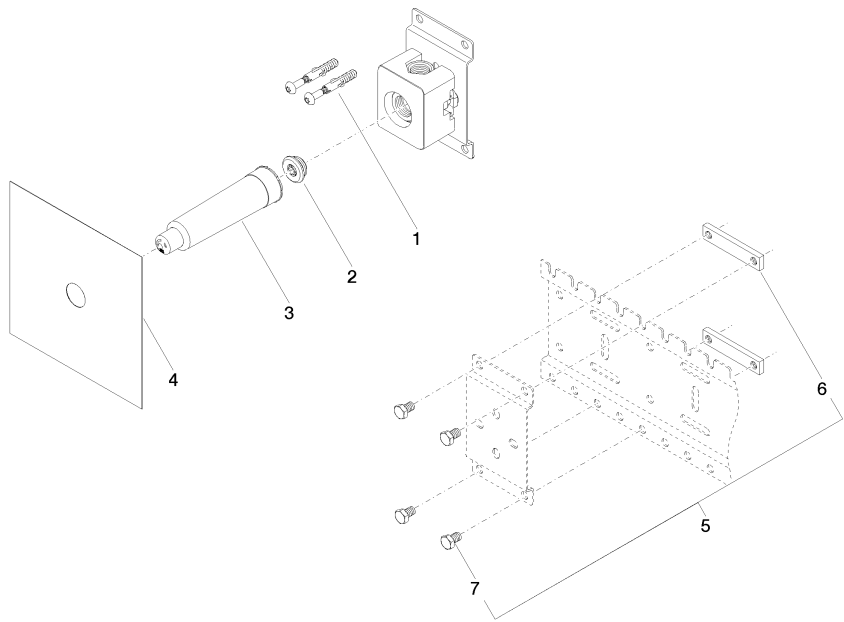
Codes & Standards

EN 200	Scottish Water Byelaws	UK Water Supply Regulations
--------	---------------------------	--------------------------------

Certificates and sustainability

DVGW_DW- 6501DN0	WRAS_2010
---------------------	-----------

35 607 970 90



Spare parts list

No.	Item Number	Name	Quantity used	Delivery time
2	04 31 20 006 00 90	plug	1.00	2
1	04 30 31 024 01 90	fixing set	2.00	2
6	09 17 20 100 90	holder	2.00	60
7	09 30 30 152 90	screw	4.00	2
5	04 17 20 100 00 90	fixing set	1.00	2
3	09 21 02 173 90	cap	1.00	2
4	04 14 03 072 01 90	gasket kit	1.00	2