

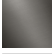
VAIA Wall valve clockwise closing 1/2" - Brushed Bronze

VAIA

36 607 819 Product version from 4/1/2025



- rosette Ø 60 mm
- head part with cut-to-length spindle and sleeve
- WRAS

	Brushed Bronze	36 607 819-42
	Chrome	36 607 819-00
	Brushed Platinum	36 607 819-06
	Platinum	36 607 819-08
	Dark Chrome	36 607 819-19
	Brushed Durabronze (23kt Gold)	36 607 819-28
	Brushed Dark Brass	36 607 819-39
	Brushed Champagne (22kt Gold)	36 607 819-46
	Champagne (22kt Gold)	36 607 819-47
	Brushed Dark Platinum	36 607 819-99

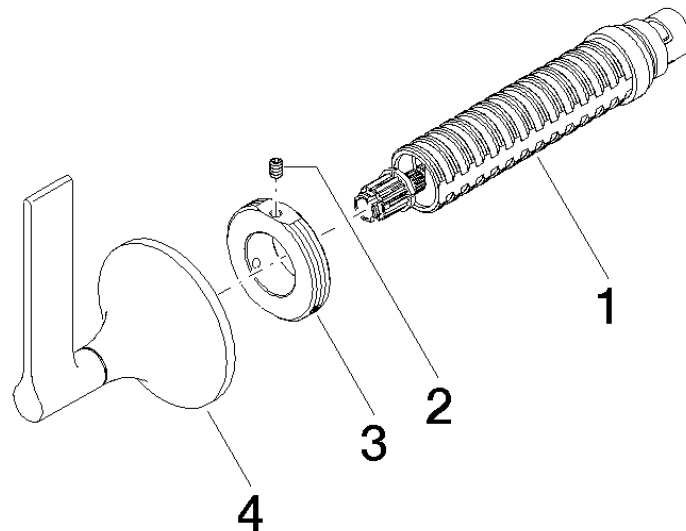
mm [inches]



Codes & Standards			
ASME A112.18.1	cUPC	DIN 4109	EN 1111
ISO 3822	Scottish Water Byelaws	UK Water Supply Regulations	Ü-Zeichen

Certificates and sustainability				
WRAS_2011	LGA_29	WRAS_2010	DVGW_DW-6512DN0	IAPMO_4976 (

Parts for other
finishes can be found
here: [Chrome](#)



Spare parts list

No.	Item Number	Name	Quantity used	Delivery time
2	09 31 11 008 90	pin	1.00	2
1	90 90 03 143 00 90	top	1.00	2
4	90 20 80 015 00-42	handle	1.00	20
3	09 21 02 163 90	disc	1.00	2