



VAIA Wall valve clockwise closing 1/2" - Champagne (22kt Gold)
VAIA

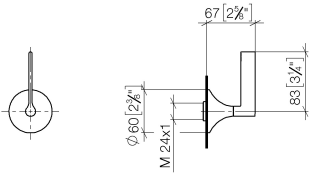
36 607 819
Product version from 4/1/2025

	<ul style="list-style-type: none"> • rosette Ø 60 mm • head part with cut-to-length spindle and sleeve • WRAS 	<div>  Champagne (22kt Gold) </div>	36 607 819-47
		<div>  Chrome </div>	36 607 819-00
		<div>  Brushed Platinum </div>	36 607 819-06
		<div>  Platinum </div>	36 607 819-08
		<div>  Dark Chrome </div>	36 607 819-19
		<div>  Brushed Durabronze (23kt Gold) </div>	36 607 819-28
		<div>  Brushed Dark Brass </div>	36 607 819-39
		<div>  Brushed Bronze </div>	36 607 819-42
		<div>  Brushed Champagne (22kt Gold) </div>	36 607 819-46
		<div>  Brushed Dark Platinum </div>	36 607 819-99

Required miscellaneous

	Wall valve 1/2" -	35 607 970 90
	<ul style="list-style-type: none"> • max. recess depth 145 mm • min. recess depth 75 mm 	

mm [inches]

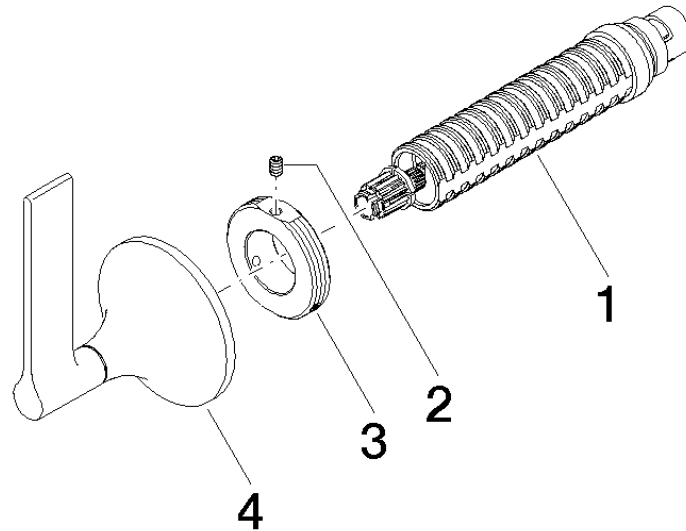


Codes & Standards

DIN 4109	EN 1111	EN 200	ISO 3822
Scottish Water Byelaws	UK Water Supply Regulations	Ü-Zeichen	

Certificates and sustainability

DVGW_DW-6501DN0	WRAS_2011	LGA_29	WRAS_2010	DVGW_DW-6512DN0
-----------------	-----------	--------	-----------	-----------------



Spare parts list

No.	Item Number	Name	Quantity used	Delivery time
2	09 31 11 008 90	pin	1.00	2
1	90 90 03 143 00 90	top	1.00	2
3	09 21 02 163 90	disc	1.00	2
4	90 20 80 015 00-47	handle	1.00	30