

## CYO Wall-mounted basin mixer without pop-up waste - Durabronss / Geëts Durabronss (23kt Goud)

CYO








36 707 811



- 160mm projection
- fixed spout
- rectangular, air-enriched flow
- hole diameter valve 37 mm
- hole diameter spout 37 mm
- handle Ø 60mm
- max. flow 4.5 l/min
- lead-free
- This product can help a building meet the requirements of Green Building Rating Systems, e.g. LEED®, BREEAM®, DGNB
- WRAS

**NOTE: The handle inserts must be ordered separately from the fittings!**

NOTE: The handle inserts must be ordered separately from the fittings!

	Durabronss / Geëts Durabronss (23kt Goud)	36 707 811-38
	Chrome	36 707 811-00
	Brushed Platinum	36 707 811-06
	Dark Chrome	36 707 811-19
	Brushed Durabronss (23kt Goud)	36 707 811-28
	Platinum / Brushed Platinum	36 707 811-36
	Brushed Dark Platinum	36 707 811-99

### Required miscellaneous



- Concealed wall-mounted mixer centred spout -** 35 700 970 90
- max. recess depth 145 mm
  - min. recess depth 85 mm

### Required miscellaneous

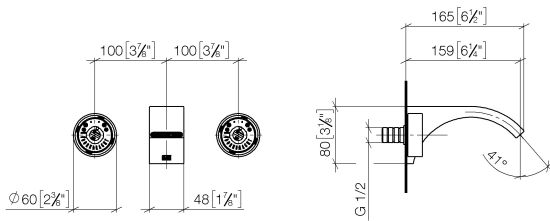


- Concealed wall-mounted mixer variable positioning -** 35 720 970 90
- min. recess depth 85 mm
  - max. recess depth 145 mm

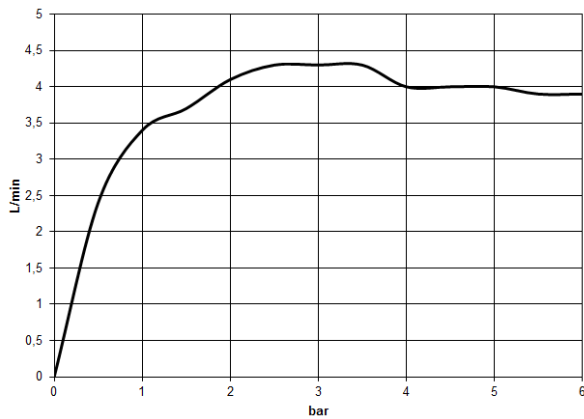
# CYO Wall-mounted basin mixer without pop-up waste - Durabron / Brushed Durabron (23kt Gold)

CYO

36 707 811  
mm [inches]



## Flow rate chart



## Codes & Standards

DIN 4109

ISO 3822

NSF372

NSF61

Scottish Water  
Byelaws

UK Water Supply  
Regulations

Ü-Zeichen



CYO Wall-mounted basin mixer without pop-up waste - Durabrass / Brushed  
Durabrass (23kt Gold)

---

CYO

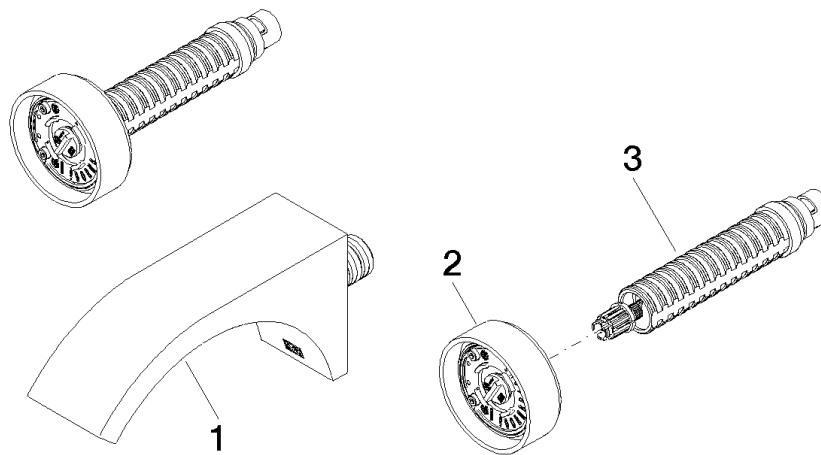
36 707 811

Certificates and sustainability

---

WRAS_2111	IAPMO_N-4976	IAPMO_6397	LGA_38
-----------	--------------	------------	--------

36 707 811



## Spare parts list

No.	Item Number	Name	Quantity used	Delivery time
2	90 18 40 290 00-38	handle	1.00	20
1	13 800 811-38	CYO Wall-mounted basin spout without pop-up waste - Durabron / Brushed Durabron (23kt Gold)	1.00	20
3	90 90 03 171 01 90	top	1.00	2