


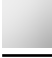





## MADISON Wall-mounted basin mixer without pop-up waste - Brushed Dark Brass

MADISON

36 712 361 Product version from 7/3/2016



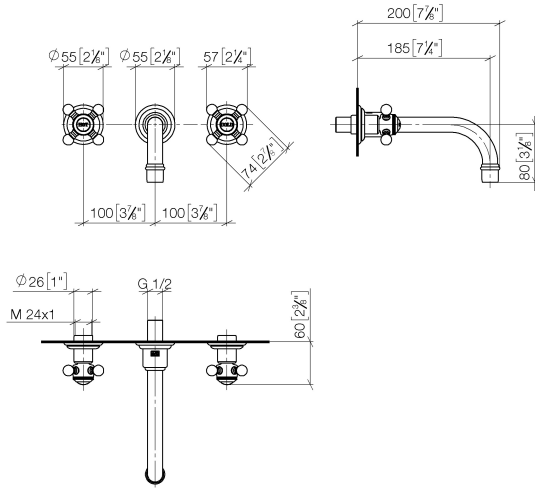
- 190mm projection
- fixed spout
- circular, air-enriched flow
- hole diameter valve 40 mm
- hole diameter spout 40 mm
- slide-on rosettes Ø 55 mm
- max. flow 7 l/min
- lead-free
- This product can help a building meet the requirements of Green Building Rating Systems, e.g. LEED®, BREEAM®, DGNB

	Brushed Dark Brass	36 712 361-39
	Chrome	36 712 361-00
	Brushed Platinum	36 712 361-06
	Platinum	36 712 361-08
	Durabrass (23kt Gold)	36 712 361-09
	Brushed Durabrass (23kt Gold)	36 712 361-28
	Brushed Dark Platinum	36 712 361-99

# MADISON Wall-mounted basin mixer without pop-up waste - Brushed Dark Brass

MADISON

36 712 361 Product version from 7/3/2016  
mm [inches]



Flow rate chart



## Codes & Standards

DIN 4109

ISO 3822

Scottish Water  
Byelaws

UK Water Supply  
Regulations

Ü-Zeichen



## MADISON Wall-mounted basin mixer without pop-up waste - Brushed Dark Brass

MADISON

---

36 712 361 Product version from 7/3/2016

Certificates and sustainability

---

LGA\_19

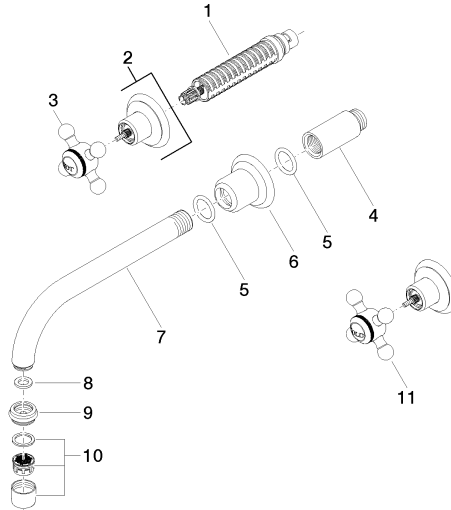
WRAS\_250402

## MADISON Wall-mounted basin mixer without pop-up waste - Brushed Dark Brass

MADISON

36 712 361 Product version from 7/3/2016

Parts for other  
finishes can be found  
here: [Chrome](#)



36 712 361-FF

### Spare parts list

No.	Item Number	Name	Quantity used	Delivery time
7	04 28 22 090 10-39	spout	1.00	60
3	04 20 36 100 01-39	handle ( hot )	1.00	-
Spare part can no longer be ordered, please order the replacement item				
5	90 14 10 026 00 90	seal	1.00	2
2	36 310 361-39	MADISON Wall valve - Brushed Dark Brass	2.00	30
9	09 24 03 022 10-39	nipple	1.00	60
11	04 20 36 100 00-39	handle ( cold )	1.00	-
Spare part can no longer be ordered, please order the replacement item				
4	09 24 03 081 10 90	extension	1.00	2
8	90 14 05 020 00 90	seal	1.00	2
10	90 23 01 119 02-39	aerator	1.00	30
1	90 90 03 157 00 90	top	2.00	2
6	09 27 36 010-39	rosette	1.00	60