

## TARA Wall-mounted basin mixer without pop-up waste - Chrome

TARA

36 717 882 Product version from 4/1/2024



- 240mm projection
- fixed spout
- circular, air-enriched flow
- hole diameter valve 40 mm
- hole diameter spout 40 mm
- rosette Ø 55 mm
- max. flow 7 l/min
- lead-free
- WRAS
- This product can help a building meet the requirements of Green Building Rating Systems, e.g. LEED®, BREEAM®, DGNB

|   |                                |               |
|---|--------------------------------|---------------|
|    | Chrome                         | 36 717 882-00 |
|    | Brushed Platinum               | 36 717 882-06 |
|    | Platinum                       | 36 717 882-08 |
|    | Dark Chrome                    | 36 717 882-19 |
|    | Brushed Durabronze (23kt Gold) | 36 717 882-28 |
|    | Matte Black                    | 36 717 882-33 |
|    | Brushed Dark Brass             | 36 717 882-39 |
|    | Brushed Bronze                 | 36 717 882-42 |
|    | Brushed Champagne (22kt Gold)  | 36 717 882-46 |
|   | Champagne (22kt Gold)          | 36 717 882-47 |
|  | Brushed Chrome                 | 36 717 882-93 |
|  | Brushed Dark Platinum          | 36 717 882-99 |

### Required miscellaneous



- Concealed wall-mounted mixer centred spout -** 35 700 970 90
- max. recess depth 145 mm
  - min. recess depth 85 mm

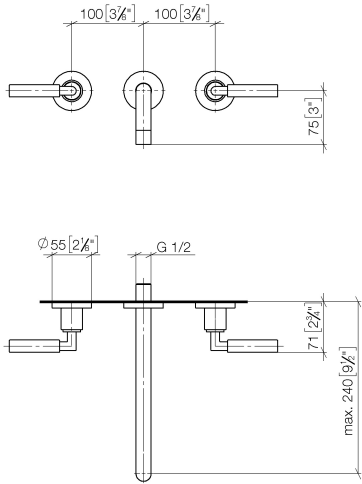
### Required miscellaneous



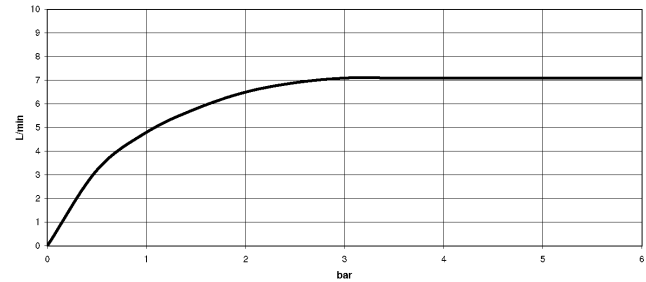
- Concealed wall-mounted mixer variable positioning -** 35 720 970 90
- min. recess depth 85 mm
  - max. recess depth 145 mm

36 717 882    Product version from 4/1/2024

mm [inches]



Flow rate chart



Codes & Standards

|                             |           |            |                        |
|-----------------------------|-----------|------------|------------------------|
| DIN 4109                    | EN 200    | ISO 3822   | Scottish Water Byelaws |
| UK Water Supply Regulations | Ü-Zeichen | VA-Zeichen | XP P 41-280            |



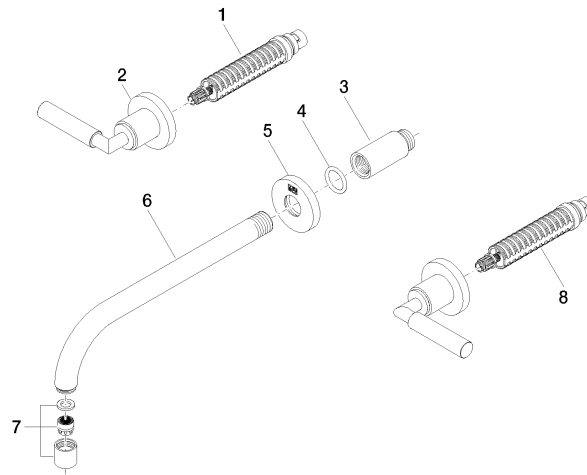
TARA Wall-mounted basin mixer without pop-up waste - Chrome

TARA

36 717 882    Product version from 4/1/2024

Certificates and sustainability

|           |        |               |        |
|-----------|--------|---------------|--------|
| WRAS_2107 | LGA_18 | ACS_20 ACC LY | ETA_19 |
|-----------|--------|---------------|--------|



## Spare parts list

| No. | Item Number        | Name       | Quantity used | Delivery time |
|-----|--------------------|------------|---------------|---------------|
| 3   | 09 24 03 081 10 90 | extension  | 1.00          | 2             |
| 2   | 36 310 882-00      | connection | 2.00          | 10            |
| 8   | 90 90 03 157 00 90 | top        | 1.00          | 2             |
| 1   | 90 90 03 156 00 90 | top        | 1.00          | 2             |
| 5   | 09 27 22 503-00    | rosette    | 1.00          | 10            |
| 7   | 90 23 01 019 00-00 | aerator    | 1.00          | 10            |
| 6   | 04 28 22 105 10-00 | spout      | 1.00          | 10            |
| 4   | 90 14 10 026 00 90 | seal       | 1.00          | 2             |