

**META Wall-mounted single-lever basin mixer without pop-up waste - Brushed Platinum**

META


36 804 661



- 160mm projection
- fixed spout
- circular, air-enriched flow
- hole diameter 60 mm
- rosette Ø 78 mm
- max. flow 5.7 l/min
- lead-free
- with single-point mounting
- This product can help a building meet the requirements of Green Building Rating Systems, e.g. LEED®, BREEAM®, DGNB
- WRAS 2003025

	Brushed Platinum	36 804 661-06
	Chrome	36 804 661-00
	Dark Chrome	36 804 661-19
	Light Gold	36 804 661-26
	Brushed Light Gold	36 804 661-27
	Matte Black	36 804 661-33
	Brushed Bronze	36 804 661-42
	Brushed Champagne (22kt Gold)	36 804 661-46
	Champagne (22kt Gold)	36 804 661-47
	Brushed Chrome	36 804 661-93
	Brushed Dark Platinum	36 804 661-99

**Required miscellaneous**

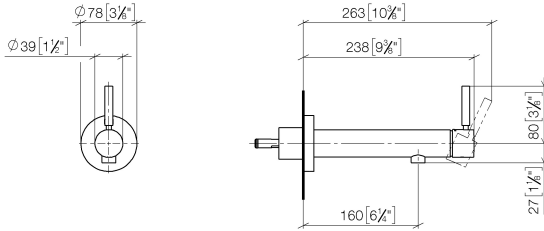
	<b>Concealed wall mounting -</b> •max. recess depth 103 mm •min. recess depth 78 mm	35 003 970 90
---	---	---------------



# META Wall-mounted single-lever basin mixer without pop-up waste - Brushed Platinum

META

36 804 661  
mm [inches]



## Flow rate chart



## Codes & Standards

DIN 4109

EN 817

ISO 3822

Scottish Water  
Byelaws

UK Water Supply  
Regulations

Ü-Zeichen



**META Wall-mounted single-lever basin mixer without pop-up waste - Brushed  
Platinum**

---

META

36 804 661

Certificates

---

DVGW\_DW-  
6512DN0

WRAS\_2003

LGA\_19



# META Wall-mounted single-lever basin mixer without pop-up waste - Brushed Platinum

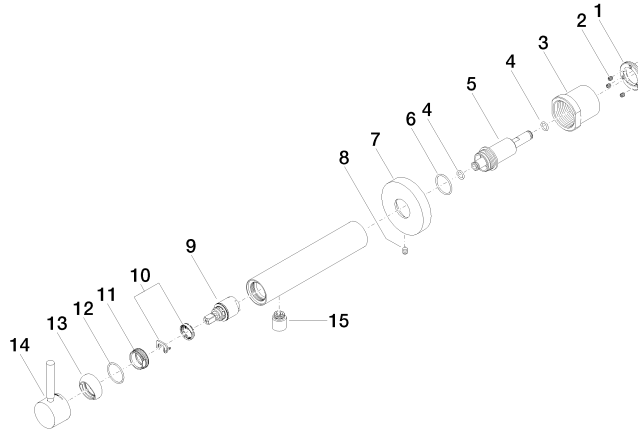
META

36 804 661

Product version up to 1/23/2020

Product version from 1/23/2020 to 4/2/2020

**Product version from 4/2/2020**





**META Wall-mounted single-lever basin mixer without pop-up waste - Brushed Platinum**

META

36 804 661

**Spare parts list**

Product version up to 1/23/2020

Product version from 1/23/2020 to 4/2/2020

**Product version from 4/2/2020**

No.	Item Number	Name	Quantity used	Delivery time
	09 24 77 002 90	nut	18	2