

41 620 979



- exposed trim parts
- Rain panel with 3 different flow modes
- AQUACIRCLE RAIN: Circular rain curtain, max. flow rate 12 l/min (at 3 bar)
- TEMPEST RAIN: Natural rain, max. flow rate 10 l/min (at 3 bar)
- Queen's Collar: rounded cascade, max. 24 l/min
- Matt white cover, RAL 9003
- Outer diameter 1240 mm, opening diameter 450 mm
- with anti-scale system
- Weight 22.5 kg
- Control elements not included among the items supplied

## Ambient lighting

- LED colour temperature approx. 2700 K
- Bulbs protected against splashing water
- Technology: LED, not dimmable
- Provided by customer: Light switch

## Environment

- Not suitable for use in a steam room.
- Not suitable for outdoor use.
- Not suitable for use in chlorinated or salty environments.
- Comply with the protection zone regulations as defined in DIN VDE 0100, Part 701 (IEC 60364-7-701).

**Rain panel cover for adaptation to ceiling colour available in all RAL colours, price and delivery time on request**

Rain panel cover for adaptation to ceiling colour available in all RAL colours, price and delivery time on request

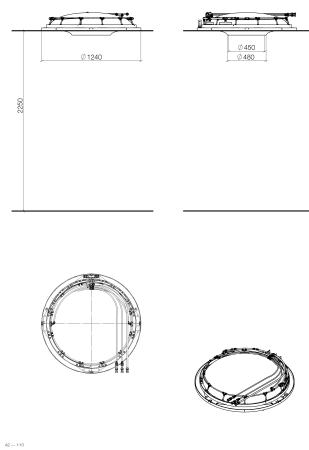
## Required miscellaneous



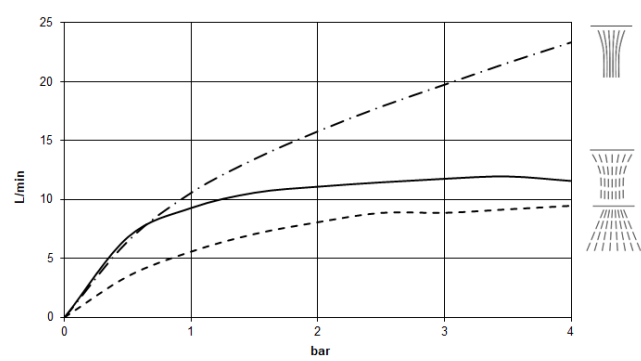
### **AQUAMOON Concealed ceiling installation box -** 35 620 970 90

- Ceiling installation enclosure 1356 x 1356 x 290 mm
- concealed rough parts
- Opening diameter 1252 mm
- min. recess depth 290 mm

41 620 979



Flow rate chart



Codes & Standards

DIN 4109	ISO 3822	Ü-Zeichen
----------	----------	-----------



## AQUAMOON Rain panel - Matte White

---

SERIES-VARIOUS

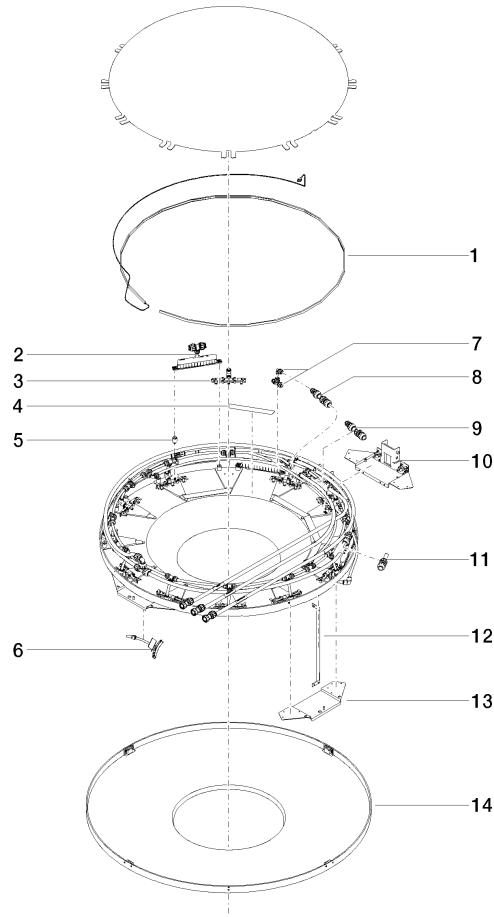
41 620 979

Certificates and sustainability

---

LGA\_29

41 620 979



## Spare parts list

No.	Item Number	Name	Quantity used	Delivery time
	13 90 17 20 216 00 90	holder	3.00	2
	7 90 24 04 321 00 90	threaded connector	1.00	2
	1 90 10 01 183 00 90	lamp	1.00	2
	12 90 17 20 217 00 90	holder	4.00	2
	6 90 17 09 057 00 90	jet module	12.00	2
	4 90 17 20 221 00 90	holder	5.00	2
	8 90 24 04 346 00 90	connection AQUACIRCLE	1.00	2
	2 90 17 09 058 00 90	jet module	5.00	2
	14 90 11 02 325 00 90	cover	1.00	2
	10 90 17 20 211 00 90	joint	1.00	2
	3 90 17 09 056 00 90	jet module	12.00	2
	11 90 24 04 314 01 90	connection QUEENSCOLLAR	1.00	2
	5 90 18 40 222 00 90	adaptor	24.00	2
	9 90 24 04 314 00 90	connection TEMPEST	1.00	60