

## SERIES-VARIOUS AQUAHALO Rain panel - Brushed Champagne (22kt Gold) SERIES-VARIOUS

41 750 979 Product version from 4/1/2024



- exposed trim parts
- Rain panel with 3 different flow modes
- AQUACIRCLE RAIN: Circular rain curtain, max. flow rate 14 l/min (at 3 bar)
- TEMPEST RAIN: Natural rain, max. flow rate 9 l/min (at 3 bar)
- DIAMOND RAIN: Ring of rain, max. flow rate 6.8 l/min (at 3 bar)

### Technical data:

- Outer diameter: 605 mm, opening diameter: 465 mm
- Weight: 6 kg

### Electric:

#### Separate LED power supply

- 350mA (CC)

#### Input LED power supply

- 350mA (CC)
- Input 100-240V AC 50-60Hz
- Technology: LED, not dimmable

#### Spot lighting

#### Output LED power supply

#### Output specification LED power supply

- IP67
- SELV (Safety Extra Low Voltage)
- Class 2

#### Ceiling module power supply

- Supply pipe 7 m
- LED colour temperature approx. 3000 K
- Bulbs protected against splashing water
- Provided by customer: Light switch

### Environment



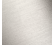


#### Planning tips:

- Not suitable for outdoor use.
- Not suitable for use in a steam room.
- Not suitable for use in chlorinated or salty environments.
- Comply with the protection zone regulations as defined in DIN VDE 0100, Part 701 (IEC 60364-7-701).

#### Notes:

- Recommended control element: xTool
- Contains energy efficiency class bulbs

Pre-assembly kit for three-way diverter included

	Brushed Champagne (22kt Gold)	41 750 979-46
	Chrome	41 750 979-00
	Brushed Platinum	41 750 979-06
	Matte Black	41 750 979-33
	Champagne (22kt Gold)	41 750 979-47

## SERIES-VARIOUS AQUAHALO Rain panel - Brushed Champagne (22kt Gold) SERIES-VARIOUS

41 750 979 Product version from 4/1/2024

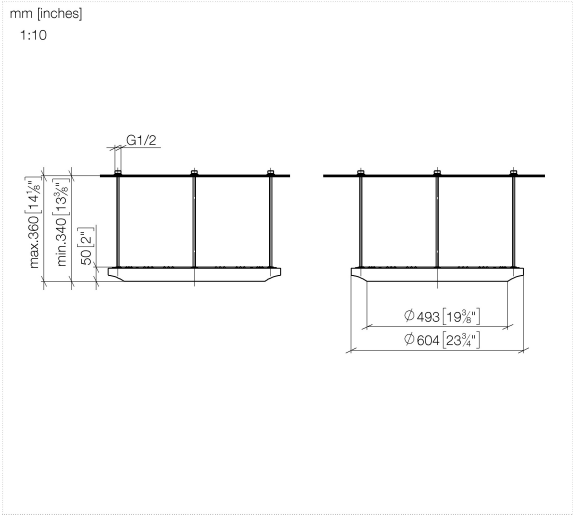
### Required miscellaneous



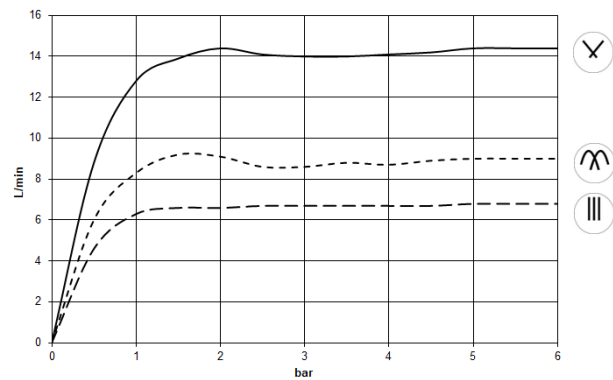
#### **SERIES-VARIOUS AQUAHALO** 35 750 970-46

##### **Concealed ceiling installation box - Brushed Champagne (22kt Gold)**

- concealed rough parts
- Ceiling installation enclosure 605 x 605 x 95 mm
- Weight: 10 kg
- min. recess depth 110 mm
- Pre-assembly kit for three-way diverter included



### Flow rate chart



### Codes & Standards

DIN 4109	ISO 3822	Scottish Water Byelaws	UK Water Supply Regulations
----------	----------	---------------------------	--------------------------------

### Ü-Zeichen



## SERIES-VARIOUS AQUAHALO Rain panel - Brushed Champagne (22kt Gold) SERIES-VARIOUS

---

41 750 979 Product version from 4/1/2024

Certificates and sustainability

---

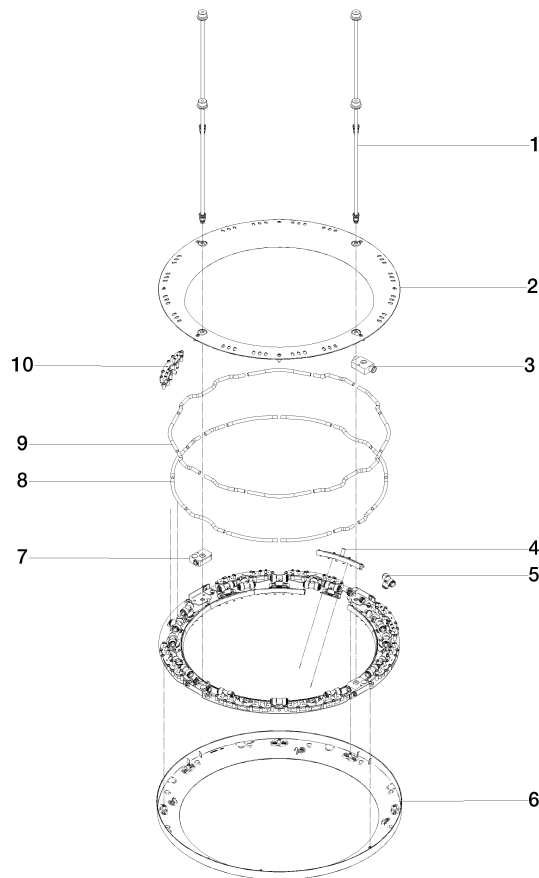
LGA\_38

WRAS\_250302

## SERIES-VARIOUS AQUAHALO Rain panel - Brushed Champagne (22kt Gold) SERIES-VARIOUS

41 750 979 Product version from 4/1/2024

Parts for other  
finishes can be found  
here: [Chrome](#)



### Spare parts list

No.	Item Number	Name	Quantity used	Delivery time
	2 90 12 05 087 00-46	casing	1.00	30
	1 90 28 22 605 01-46	distributor	4.00	30
	5 90 24 04 384 00 90	adaptor	20.00	2
	8 90 30 03 118 00 90	hose	1.00	2
	4 90 17 09 060 01 90	jet module	12.00	2
	3 90 24 03 535 01 90	distributor	2.00	40
	10 90 17 09 061 01 90	jet module TEMPEST	8.00	2
	9 90 30 03 117 00 90	hose	1.00	40
	6 90 12 05 088 00-46	casing	1.00	30
	7 90 24 03 535 00 90	distributor	2.00	2