

Reserve tissue holder - Chrome

SERIES SPECIFIC

83 590 979 Product version from 7/1/2023

- rosette Ø 40 mm
- 105mm projection



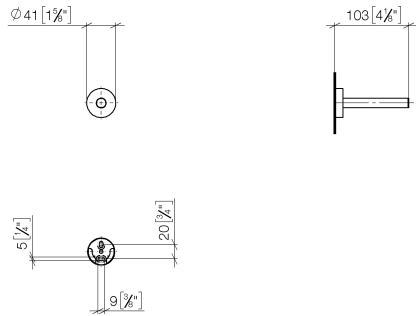
	Chrome	83 590 979-00
	Brushed Platinum	83 590 979-06
	Dark Chrome	83 590 979-19
	Light Gold	83 590 979-26
	Brushed Light Gold	83 590 979-27
	Matte Black	83 590 979-33
	Brushed Dark Brass	83 590 979-39
	Brushed Bronze	83 590 979-42
	Brushed Champagne (22kt Gold)	83 590 979-46
	Champagne (22kt Gold)	83 590 979-47
	Brushed Chrome	83 590 979-93
	Brushed Dark Platinum	83 590 979-99

Reserve tissue holder - Chrome

SERIES SPECIFIC

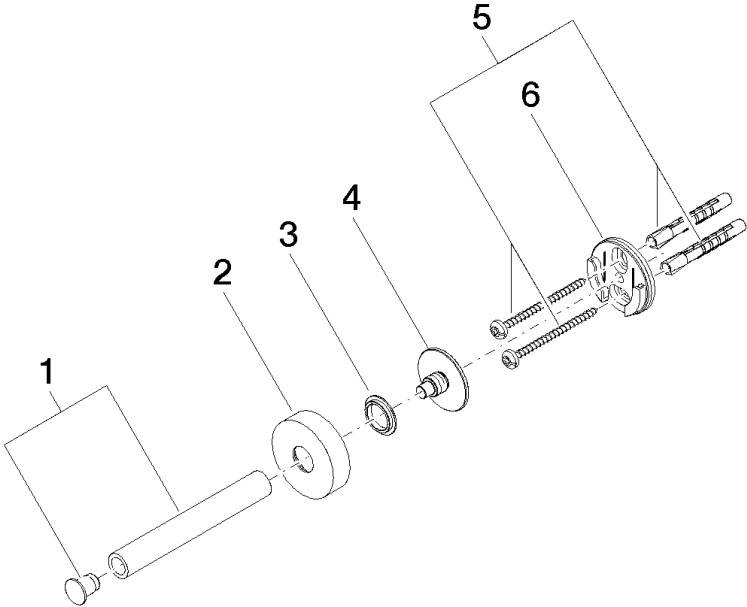
83 590 979 Product version from 7/1/2023

mm [inches]



83 590 979 Product version from 7/1/2023

Parts for other
finishes can be found
here: Brushed
Platinum



Spare parts list

No.	Item Number	Name	Quantity used	Delivery time
6	08 17 97 501 07	holder	3.00	2
2	08 27 97 500-00	rosette	1.00	10
1	90 17 97 567 00-00	holder	1.00	10
5	05 30 31 025 00 90	fixing set	1.00	2
3	08 30 11 516 90	ring	1.00	2
4	08 17 97 560 90	holder	1.00	2