

Strainer waste with control handle - Brushed Champagne (22kt Gold)







10 710 970 Product version from 10/1/2024



- control for single basin
- including adapter for Bowden cable

Not compatible with brushed stainless steel kitchen sinks 38 XXX 004-86.

Fits ELIO, ENO, MEM, META SQUARE, SYNC, TARA and TARA ULTRA

| | | |
|---|-------------------------------|---------------|
|  | Brushed Champagne (22kt Gold) | 10 710 970-46 |
|  | Chrome | 10 710 970-00 |
|  | Brushed Platinum | 10 710 970-06 |
|  | Platinum | 10 710 970-08 |
|  | Durabrass (23kt Gold) | 10 710 970-09 |
|  | Dark Chrome | 10 710 970-19 |
|  | Brushed Durabrass (23kt Gold) | 10 710 970-28 |
|  | Matte Black | 10 710 970-33 |
|  | Champagne (22kt Gold) | 10 710 970-47 |
|  | Brushed Chrome | 10 710 970-93 |
|  | Brushed Dark Platinum | 10 710 970-99 |

Strainer waste with control handle - Brushed Champagne (22kt Gold)

10 710 970 Product version from 10/1/2024

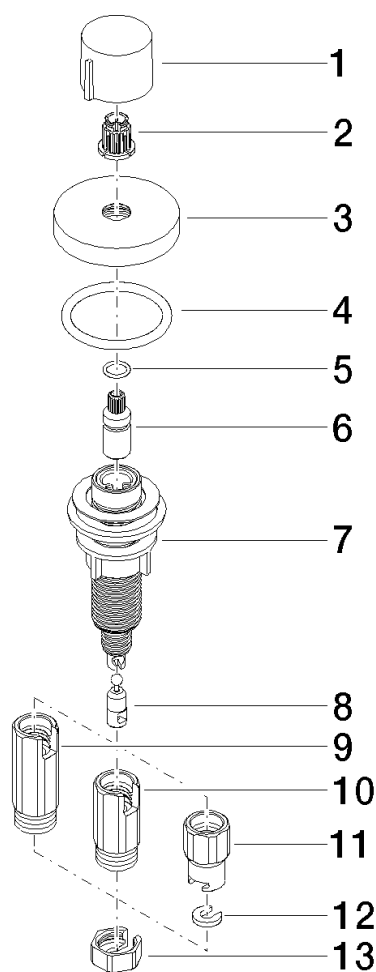
mm [inches]



Strainer waste with control handle - Brushed Champagne (22kt Gold)

10 710 970 Product version from 10/1/2024

Parts for other
finishes can be found
here: [Chrome](#)



Spare parts list

| No. | Item Number | Name | Quantity used | Delivery time |
|--|--------------------|------------|---------------|---------------|
| 1 | 09 20 97 030-46 | handle | 1 | 60 |
| 2 | 90 12 12 002 00 90 | fixing cap | 1 | 2 |
| 3 | 09 27 87 006-46 | rosette | 1 | 30 |
| 4 | 90 14 10 043 00 90 | seal | 1 | 2 |
| 5 | 09 14 10 042 90 | seal | 1 | 2 |
| 6 | 09 29 06 087-46 | spindle | 1 | - |
| Spare part can no longer be ordered, please order the replacement item | | | | |
| 7 | 04 30 01 029 00 90 | adaptor | 1 | 2 |
| 8 | 09 24 03 175 90 | adaptor | 1 | 2 |
| 9 | 09 11 10 073-07 | connection | 1 | 30 |
| 10 | 09 11 10 074-07 | connection | 1 | 30 |
| 11 | 09 11 10 079-07 | connection | 1 | 30 |
| 12 | 09 30 11 087 90 | disc | 1 | 2 |
| 13 | 09 23 30 024-07 | nut | 1 | 30 |